

RPT0014

Leader in Biomolecular Solutions for Life Science



Recombinant *Peptostreptococcus magnus* Protein L Protein

Catalog No.: RPT0014

Recombinant

Sequence Information

Species	Gene ID	Swiss Prot
Peptostreptococcus magnus		D6S9W1

Tags

N-His

Synonyms

RPL;Protein L

Background

Protein L was isolated from the surface of bacterial species *Peptostreptococcus magnus* and was found to bind Ig(IgG,IgM,IgA,IgE and IgD) through L chain interaction, from which the name was suggested. Despite this wide-ranging binding capability with respect to Ig classes, Protein L is not a universal immunoglobulin-binding protein. Binding of Protein L to immunoglobulins is restricted to those containing kappa light chains (i.e., k chain of the VL domain). In humans and mice, kappa (k) light chains predominate. The remaining immunoglobulins have lambda (l) light chains. The recombinant protein contains four immunoglobulin (Ig) binding domains (Bdomains) of the native protein. Besides antibody, protein L is also suitable for binding of a wide range of antibody fragments such as Fabs, single-chain variable fragments (scFv), and domain antibodies (Dabs).

Product Information

Source	Purification
HEK293 cells	> 95% by SDS-PAGE.

Endotoxin

< 0.01 EU/μg

Formulation

Lyophilized from a 0.22 μm filtered solution of PBS, pH 7.4.

Reconstitution

Centrifuge the vial before opening. Reconstitute to a concentration of 0.1-0.5 mg/mL in sterile distilled water. Avoid vortex or vigorously pipetting the protein. For long term storage, it is recommended to add a carrier protein or stabilizer (e.g. 0.1% BSA, 5% HSA, 10% FBS or 5% Trehalose), and aliquot the reconstituted protein solution to minimize freeze-thaw cycles.

Basic Information

Description

Recombinant *Peptostreptococcus magnus* Protein L Protein is produced by HEK293 cells expression system. The target protein is expressed with sequence (Val103-Glu408) of *Peptostreptococcus magnus* Protein L (Accession #) fused with and 6×His tag at the N-terminus.

Bio-Activity

Storage

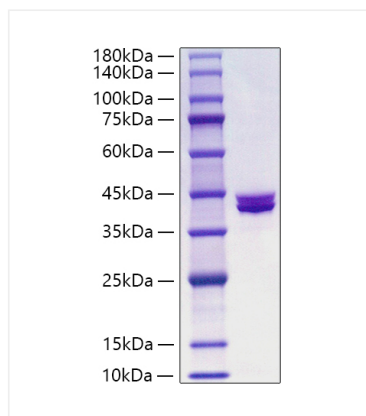
Store the lyophilized protein at -20°C to -80°C for long term. After reconstitution, the protein solution is stable at -20°C for 3 months, at 2-8°C for up to 1 week. Avoid repeated freeze/thaw cycles.

Contact



www.abclonal.com

Validation Data



Recombinant *Peptostreptococcus magnus* Protein L Protein was determined by SDS-PAGE with Coomassie Blue, showing a band at 35-45 kDa.