

RP03198LQ

Leader in Biomolecular Solutions for Life Science



# Recombinant Human CTSA Protein

Catalog No.: RP03198LQ

Recombinant

## Sequence Information

Species	Gene ID	Swiss Prot
Human	5476	P10619

### Tags

C-His

### Synonyms

Lysosomal protective protein;CTSA;Carboxypeptidase C;Carboxypeptidase L;Cathepsin A

## Product Information

Source	Purification
HEK293 cells	> 95% by SDS-PAGE.

### Endotoxin

< 1.0 EU/μg of the protein by LAL method.

### Formulation

Supplied as a 0.2 μm filtered solution of 20 mM PB, 150 mM NaCl, pH 7.4.

### Reconstitution

## Background

Cathepsin A is active in cellular compartments called lysosomes. These compartments contain enzymes that digest and recycle materials when they are no longer needed. Cathepsin A interacts with the enzymes β-galactosidase and neuraminidase 1, which play a role in the breakdown of complexes of sugar molecules (oligosaccharides) attached to certain proteins (glycoproteins) or fats (glycolipids). Cathepsin A forms a complex with these two enzymes and directs their transport within the cell to the lysosomes. Within lysosomes, cathepsin A activates the enzymes and prevents their breakdown.

## Basic Information

### Description

Recombinant Human CTSA Protein is produced by HEK293 cells expression system. The target protein is expressed with sequence (Ala29-Tyr480) of human CTSA (Accession #NP\_000299.2) fused with His tag at the C-terminus.

### Bio-Activity

### Storage

Store at ≤-70°C, stable for 6 months after receipt. Store at ≤-70°C, stable for 3 months under sterile conditions after opening. Please minimize freeze-thaw cycles. Avoid repeated freeze/thaw cycles.

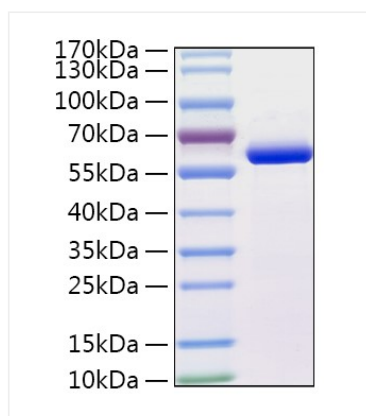
## Contact



[www.abclonal.com](http://www.abclonal.com)

## Validation Data

---



Recombinant Human CTSA Protein was determined by SDS-PAGE with Coomassie Blue, showing a band at 55-60 kDa.