

RP02509

Leader in Biomolecular Solutions for Life Science



Recombinant Human IL-37/IL-1F7 Protein

Catalog No.: RP02509

Recombinant

Sequence Information

Species	Gene ID	Swiss Prot
Human	27178	Q9NZH6

Tags

C-His

Synonyms

IL37;FIL1;FIL1(ZETA);FIL1Z;IL-1F7;IL-1H;IL-1H4;IL-1RP1;IL-37;IL1F7;IL1H4;IL1RP1

Product Information

Source	Purification
<i>E. coli</i>	> 95% by SDS-PAGE.

Endotoxin

<0.1EU/μg

Formulation

Lyophilized from a 0.2 μm filtered solution of PBS, pH 8.0.

Reconstitution

Centrifuge the vial before opening. Reconstitute to a concentration of 0.1-0.5 mg/mL in sterile distilled water. Avoid vortex or vigorously pipetting the protein. For long term storage, it is recommended to add a carrier protein or stabilizer (e.g. 0.1% BSA, 5% HSA, 10% FBS or 5% Trehalose), and aliquot the reconstituted protein solution to minimize free-thaw cycles.

Background

Decreasing synthesis of IL-37 in PBMCs will cause increasing production of pro-inflammatory cytokines such as IL-1 alpha, IL-1 beta, IL-6 and TNF- alpha. The IL-37 work as an innate inflammatory inhibitor is also proved by its high expression in synovial tissue from rheumatoid arthritis patients. Full length IL-37 locates mainly in the cytoplasm, and it can translocate to the nucleus after activation through cleavage by CASP1, then exerts its activity by directly interacting with SMAD3.

Basic Information

Description

Recombinant Human IL-37 Protein is produced by Escherichia coli expression system. The target protein is expressed with sequence of Human IL-37 (Accession #NP_775297.1) fused with His at C terminus.

Bio-Activity

Measured by its ability to inhibit IL-8 secretion in human PBMCs. The ED₅₀ for this effect is <0.9 μg/mL.

Storage

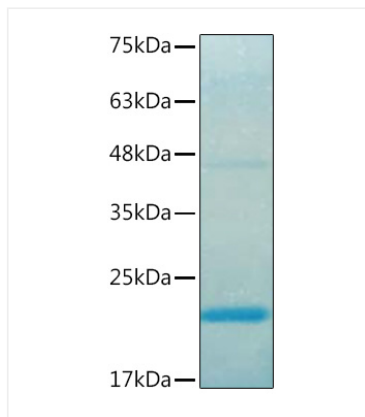
Store the lyophilized protein at -20°C to -80°C for long term. After reconstitution, the protein solution is stable at -20°C for 3 months, at 2-8°C for up to 1 week. Avoid repeated freeze/thaw cycles.

Contact



www.abclonal.com

Validation Data



Recombinant Human IL-37/IL-1F7 Protein was determined by SDS-PAGE with Coomassie Blue, showing bands at 20 kDa.