

RP02494

Leader in Biomolecular Solutions for Life Science



# Recombinant Human Siglec-8/SAF-2 Protein

Catalog No.: RP02494

Recombinant

## Sequence Information

Species	Gene ID	Swiss Prot
Human	27181	Q9NYZ4

### Tags

C-His

### Synonyms

Siglec-8;SAF2; SIGLEC-8;  
SIGLEC8L;SIGLEC8;SIGLEC-8;SIGLEC8L

## Product Information

Source	Purification
HEK293 cells	> 97% by SDS-PAGE.

### Endotoxin

< 0.01 EU/μg of the protein by LAL method.

### Formulation

Lyophilized from a 0.22 μm filtered solution of PBS, pH 7.4.

### Reconstitution

Centrifuge the tube before opening. Reconstitute to a concentration of 0.1-0.5 mg/mL in sterile distilled water. Avoid vortex or vigorously pipetting the protein. For long term storage, it is recommended to add a carrier protein or stabilizer (e.g. 0.1% BSA, 5% HSA, 10% FBS or 5% Trehalose), and aliquot the reconstituted protein solution to minimize freeze-thaw cycles.

## Background

### Basic Information

#### Description

Recombinant Human siglec 8 Protein is produced by HEK293 cells expression system. The target protein is expressed with sequence (Met17-Ala363) of Human siglec 8 fused with a His tag tag at the C-terminal.

#### Bio-Activity

#### Storage

Store the lyophilized protein at -20°C to -80°C for long term. After reconstitution, the protein solution is stable at -20°C for 3 months, at 2-8°C for up to 1 week. Avoid repeated freeze/thaw cycles.

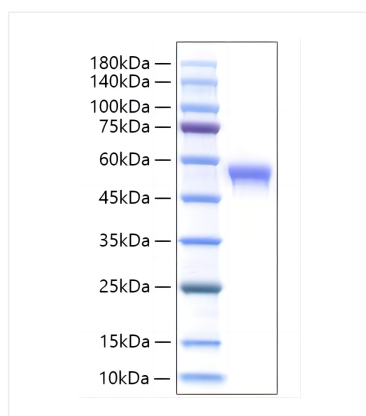
## Contact



[www.abclonal.com](http://www.abclonal.com)

## Validation Data

---



Recombinant Human Siglec-8/SAF-2 Protein was determined by SDS-PAGE with Coomassie Blue, showing a band at 45-60 kDa.