

RP02374

Leader in Biomolecular Solutions for Life Science



Biotinylated Recombinant Human ErbB-2/HER2/CD340 Protein

Catalog No.: RP02374

Recombinant

Sequence Information

Species	Gene ID	Swiss Prot
Human	2064	P04626

Tags

C-His&Avi

Synonyms

ERBB2; CD340; HER-2; HER-2/neu; HER2; MLN 19; NEU; NGL; TKR1; MLN19; erb-b2 receptor tyrosine kinase 2;ErbB2;Phospho-ErbB2 (Y1139);CD340;HER-2;HER-2/neu;HER2; MLN 19;NEU;NGL;TKR1;erb-b2 receptor tyrosine kinase 2;HER2/ErbB2;MLN19

Product Information

Source

HEK293 cells

Purification

> 95% by Tris-Bis PAGE;> 95% by SEC-HPLC

Endotoxin

< 1 EU/μg of the protein by LAL method.

Formulation

Lyophilized from a 0.22 μm filtered solution of PBS, pH 7.4.

Reconstitution

Centrifuge the tube before opening. Reconstitute to a concentration of 0.1-0.5 mg/mL in sterile distilled water. Avoid vortex or vigorously pipetting the protein. For long term storage, it is recommended to add a carrier protein or stabilizer (e.g. 0.1% BSA, 5% HSA, 10% FBS or 5% Trehalose), and aliquot the reconstituted protein solution to minimize freeze-thaw cycles.

Background

Basic Information

Description

Biotinylated Recombinant Human ErbB2/Her2 Protein is produced by Expi293 expression system. The target protein is expressed with sequence (Thr23-Thr652) of Human ErbB2/Her2 fused with a His and Avi tag at the C-terminal.

Bio-Activity

Storage

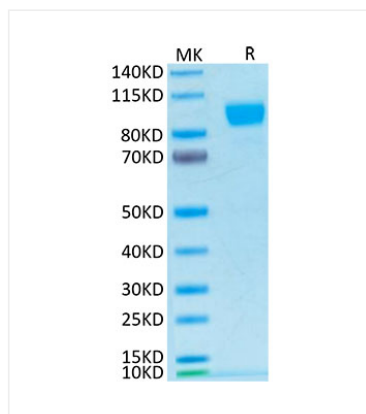
Store the lyophilized protein at -20°C to -80°C for long term. After reconstitution, the protein solution is stable at -20°C for 3 months, at 2-8°C for up to 1 week. Avoid repeated freeze/thaw cycles.

Contact

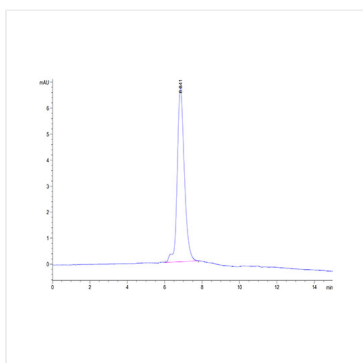


www.abclonal.com

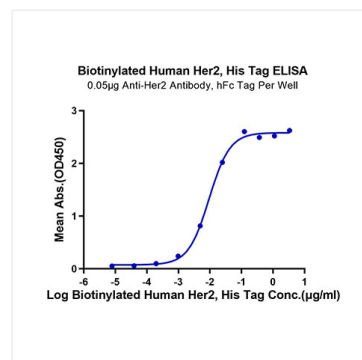
Validation Data



Biotinylated Human Her2 on Tris-Bis PAGE under reduced condition. The purity is greater than 95%.



The purity of Biotinylated Human Her2 is greater than 95% as determined by SEC-HPLC.



Immobilized Anti-Her2 Antibody, hFc Tag at 0.5μg/ml (100μl/Well) on the plate. Dose response curve for Biotinylated Human Her2, His Tag with the EC_{50} of 9.4ng/ml determined by ELISA.