

RP02162

Leader in Biomolecular Solutions for Life Science



# Recombinant Human SLAMF6/CD352 Protein

Catalog No.: RP02162

Recombinant

## Sequence Information

Species	Gene ID	Swiss Prot
Human	114836	Q96DU3

### Tags

C-His

### Synonyms

SLAMF6;CD352;KALI;KALiB;Ly108;NTB-A;NTBA;SF2000

## Product Information

Source	Purification
HEK293 cells	> 95% by SDS-PAGE.

### Endotoxin

< 1 EU/μg of the protein by LAL method.

### Formulation

Lyophilized from a 0.2 μm filtered solution of 20mM PB, 150mM NaCl, pH 7.4. Contact us for customized product form or formulation.

### Reconstitution

Centrifuge the tube before opening. Reconstitute to a concentration of 0.1-0.5 mg/mL in sterile distilled water. Avoid vortex or vigorously pipetting the protein. For long term storage, it is recommended to add a carrier protein or stabilizer (e.g. 0.1% BSA, 5% HSA, 10% FBS or 5% Trehalose), and aliquot the reconstituted protein solution to minimize freeze-thaw cycles.

## Contact



[www.abclonal.com](http://www.abclonal.com)

## Background

SLAM Family Member 6 (SLAMF6) is a 60 kD single-pass type I membrane protein that belongs to the SLAM subgroup of the CD2 family. Human SLAMF6/ NTB-A contains a 205 amino acid extracellular domain (ECD) with one Ig-like V-set and one Ig-like C2-set domain, a 21 amino acid transmembrane segment and an 84 amino acid cytoplasmic domain, with two immunoreceptor tyrosine-based switch motifs. SLAMF6 is a homodimer. SLAMF6 can interact with PTN6 and, upon phosphorylation, with PTN11 and SH2D1A/SAP. Phosphorylation-dependent NTB-A association with SAP is required for full production of IFN- γ by NK cells and independent of EAT-2 binding. It Triggers cytolytic activity only in natural killer cells (NK) expressing high surface densities of natural cytotoxicity receptors. On B cells, NTB-A modulates immunoglobulin class switching and the balance between tolerance and autoimmunity.

## Basic Information

### Description

Recombinant Human SLAMF6/CD352 Protein is produced by Mammalian expression system. The target protein is expressed with sequence (Leu28-Lys225) of human SLAMF6 (Accession #Q96DU3) fused with a 6xHis tag at the C- terminus.

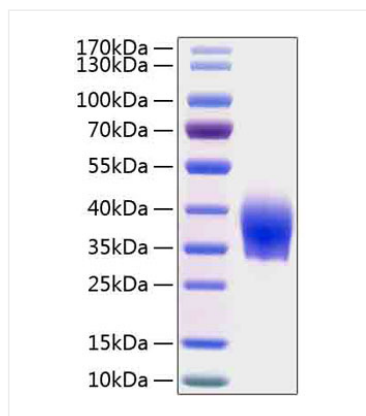
### Bio-Activity

### Storage

Store the lyophilized protein at -20°C to -80 °C for long term. After reconstitution, the protein solution is stable at -20 °C for 3 months, at 2-8 °C for up to 1 week. Avoid repeated freeze/thaw cycles.

## Validation Data

---



Recombinant Human SLAMF6/CD352  
Protein was determined by SDS-PAGE with  
Coomassie Blue, showing a band at  
30-50kDa.