

Recombinant SARS-CoV-2 papain-like protease Protein

Catalog No.: RP01274LQ **Recombinant**

Sequence Information

Species **Gene ID** **Swiss Prot**

SARS-CoV-2

Tags

N-His

Synonyms

PLPro; PL-PRO; pp1a; Papain-like
Protease; Replicase polyprotein
1a; ORF1a polyprotein; Plpro; COVID-19

Product Information

Source

E. coli

Purification

> 90% by SDS-
PAGE.

Endotoxin

< 1.0 EU/μg of the protein by LAL
method.

Formulation

Supplied as a 0.22 μm filtered solution
in 20mM Tris, 20% Glycerol, 10mM β-Me,
pH7.5. Contact us for customized
product form or formulation.

Reconstitution

Background

Basic Information

Description

Recombinant SARS-CoV-2(2019-nCoV) papain-like protease is produced by *E. coli* expression system. The target protein is expressed with sequence (Glu1564-Lys1878) of SARS-CoV-2(2019-nCoV) papain-like protease (Accession #YP_009725299.1) fused with an initial Met, a 6×His tag at the N-terminus.

Bio-Activity

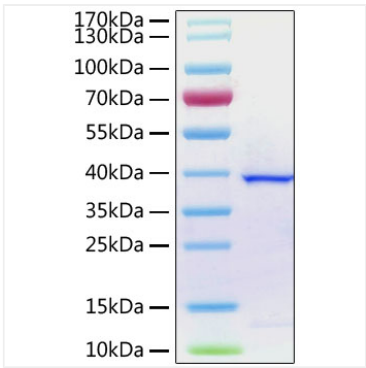
Storage

This product is stable at ≤ -70°C for up to 1 year from the date of receipt.
For optimal storage, aliquot into smaller quantities after centrifugation and store
at recommended temperature. Avoid repeated freeze-thaw cycles.
Avoid repeated freeze/thaw cycles.

Contact

 | www.abclonal.com

Validation Data



Recombinant SARS-CoV-2 papain-like protease Protein was determined by SDS-PAGE with Coomassie Blue, showing a band at 38 kDa.