

RP01257

Leader in Biomolecular Solutions for Life Science



Recombinant Human IL-15 Protein

Catalog No.: RP01257

Recombinant

Sequence Information

Species	Gene ID	Swiss Prot
Human	3600	P40933-1

Tags

C-hFc&His

Synonyms

IL15;IL-15

Product Information

Source	Purification
HEK293 cells	>95% by SDS-PAGE.

Endotoxin

< 0.1 EU/μg of the protein by LAL method.

Formulation

Lyophilized from a 0.22 μm filtered solution of PBS, pH7.4. Contact us for customized product form or formulation.

Reconstitution

Centrifuge the vial before opening. Reconstitute to a concentration of 0.1-0.5 mg/mL in sterile distilled water. Avoid vortex or vigorously pipetting the protein. For long term storage, it is recommended to add a carrier protein or stabilizer (e.g. 0.1% BSA, 5% HSA, 10% FBS or 5% Trehalose), and aliquot the reconstituted protein solution to minimize freeze-thaw cycles.

Background

Basic Information

Description

Recombinant Human IL-15 Protein is produced by HEK293 cells expression system. The target protein is expressed with sequence (Asn49-Ser162) of human IL-15 (Accession #NP_000576.1) fused with a Fc, 6×His tag at the C-terminus.

Bio-Activity

1.Measured in a cell proliferation assay using HT-2 cells. The ED₅₀ for this effect is 2-8 ng/mL, corresponding to a specific activity of 1.25 × 10⁵~5.0× 10⁵ units/mg.|2.Measured in a cell proliferation assay using MO7e human megakaryocytic leukemic cells. The ED₅₀ for this effect is 24.29-97.14 ng/mL, corresponding to a specific activity of 1.03 × 10⁴~4.12× 10⁴ units/mg.

Storage

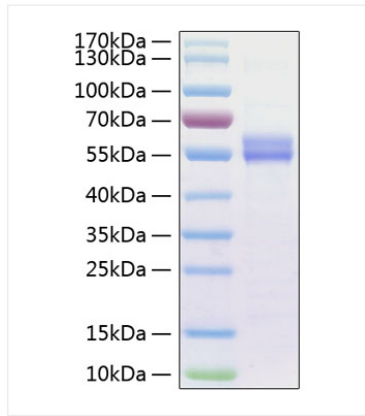
Store the lyophilized protein at -20°C to -80 °C for long term.
After reconstitution, the protein solution is stable at -20 °C for 3 months, at 2-8 °C for up to 1 week. Avoid repeated freeze/thaw cycles.

Contact

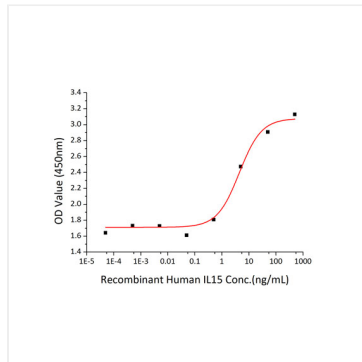


www.abclonal.com

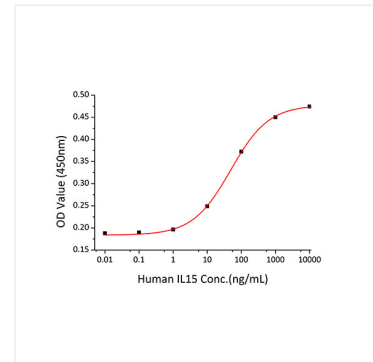
Validation Data



Active Recombinant Human IL-15 Protein was determined by SDS-PAGE with Coomassie Blue, showing a band at 55-60 kDa.



Recombinant Human IL-15 promotes the proliferation of HT-2 cells. The ED_{50} for this effect is 2-8 ng/mL, corresponding to a specific activity of $1.25 \times 10^5 \sim 5.0 \times 10^5$ units/mg.



Recombinant human IL15 promotes the proliferation of MO7e human megakaryocytic leukemic cells. The ED_{50} for this effect is 24.29-97.14 ng/mL, corresponding to a specific activity of $1.03 \times 10^4 \sim 4.12 \times 10^4$ units/mg.