

RP01113

Leader in Biomolecular Solutions for Life Science



# Recombinant Human IGFBP-8/CTGF Protein

Catalog No.: RP01113

Recombinant

## Sequence Information

Species	Gene ID	Swiss Prot
Human	1490	P29279

### Tags

No tag

### Synonyms

CTGF;CCN2;HCS24;IGFBP8;NOV2

## Product Information

Source	Purification
HEK293 cells	> 95% by SDS-PAGE.

### Endotoxin

< 1.0 EU/μg of the protein by LAL method.

### Formulation

Lyophilized from a 0.22 μm filtered solution of PBS, pH7.4. Contact us for customized product form or formulation.

### Reconstitution

Centrifuge the tube before opening. Reconstitute to a concentration of 0.1-0.5 mg/mL in sterile distilled water. Avoid vortex or vigorously pipetting the protein. For long term storage, it is recommended to add a carrier protein or stabilizer (e.g. 0.1% BSA, 5% HSA, 10% FBS or 5% Trehalose), and aliquot the reconstituted protein solution to minimize freeze-thaw cycles.

## Contact



[www.abclonal.com](http://www.abclonal.com)

## Background

This protein is a mitogen that is secreted by vascular endothelial cells. The encoded protein plays a role in chondrocyte proliferation and differentiation, cell adhesion in many cell types, and is related to platelet-derived growth factor. Certain polymorphisms in this gene have been linked with a higher incidence of systemic sclerosis.

## Basic Information

### Description

Recombinant Human IGFBP-8/CTGF Protein is produced by Mammalian expression system. The target protein is expressed with sequence (Gln27-Ala180) of human CTGF (Accession #P29279) fused with no tags.

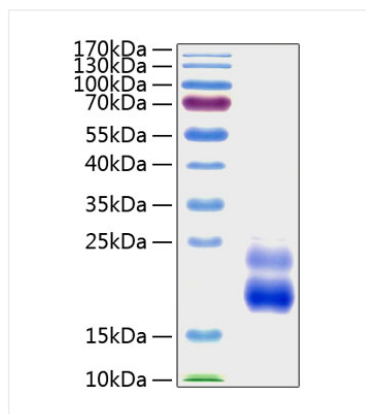
### Bio-Activity

### Storage

Store the lyophilized protein at -20°C to -80 °C for long term. After reconstitution, the protein solution is stable at -20 °C for 3 months, at 2-8 °C for up to 1 week. Avoid repeated freeze/thaw cycles.

## Validation Data

---



Recombinant Human IGFBP-8/CTGF Protein was determined by SDS-PAGE with Coomassie Blue, showing two bands at 16-25 kDa.