

# Recombinant Human HB-EGF Protein

Catalog No.: RP00754 **Recombinant**

## Sequence Information

Species	Gene ID	Swiss Prot
Human	1839	Q99075

### Tags

C-His

### Synonyms

DTR; DTS; DTSF;  
HEGFL;HBEGF;DTS;DTSF;HEGFL;HB-EGF

## Product Information

Source	Purification
HEK293 cells	> 95% by SDS-PAGE.

### Endotoxin

&lt; 1 EU/μg of the protein by LAL method.

### Formulation

Lyophilized from a 0.2 μm filtered solution of PBS, pH7.4. Contact us for customized product form or formulation.

### Reconstitution

Centrifuge the tube before opening. Reconstitute to a concentration of 0.1-0.5 mg/mL in sterile distilled water. Avoid vortex or vigorously pipetting the protein. For long term storage, it is recommended to add a carrier protein or stabilizer (e.g. 0.1% BSA, 5% HSA, 10% FBS or 5% Trehalose), and aliquot the reconstituted protein solution to minimize freeze-thaw cycles.

## Background

Heparin-binding EGF-like growth factor (HB-EGF) is a 12-16 kDa member of the epidermal growth factor (EGF) family. It possesses an EGF-like domain, and a heparin-binding motif. Mature HB-EGF is a soluble peptide that arises from proteolytic processing of the transmembrane form. Human HB-EGF shows 76% and 73% amino acid sequence identity with rat and mouse HB-EGF, respectively. It is required for normal cardiac valve formation and normal heart function, promotes smooth muscle cell proliferation. It may be involved in macrophage-mediated cellular proliferation; it is mitogenic for fibroblasts, but not endothelial cells. HB-EGF is classified as a group 2 ErbB ligand based on its ability to activate both the EGF/ErbB1 and ErbB4 receptors. Activity associated with ErbB4 binding appears to be limited to non-mitogenic actions, while EGFR binding induces both mitogenic and non-mitogenic activity.

## Basic Information

### Description

Recombinant Human HB-EGF Protein is produced by Human Cells expression system. The target protein is expressed with sequence (Leu20-Leu148) of human HB-EGF (Accession #Q99075) fused with a 6xHis tag at the C-terminus.

### Bio-Activity

### Storage

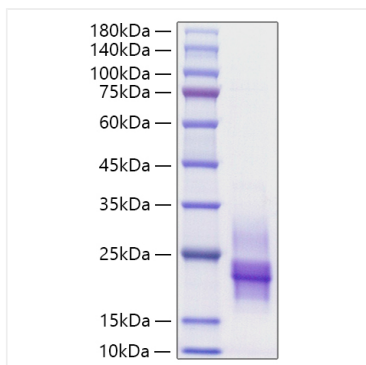
Store the lyophilized protein at -20°C to -80 °C for long term. After reconstitution, the protein solution is stable at -20 °C for 3 months, at 2-8 °C for up to 1 week. Avoid repeated freeze/thaw cycles.

## Contact

 | [www.abclonal.com](http://www.abclonal.com)

## Validation Data

---



Recombinant Human HB-EGF Protein was determined by SDS-PAGE with Coomassie Blue, showing a band at 15-25 kDa.