

RP00675

Leader in Biomolecular Solutions for Life Science



# Recombinant Human IL12RB1/CD212 Protein

Catalog No.: RP00675

Recombinant

## Sequence Information

Species	Gene ID	Swiss Prot
Human	3594	P42701

### Tags

C-Fc

### Synonyms

IL12RB1;CD212;IL-12R-  
BETA1;IL12RB;IMD30

## Background

Interleukin12 receptor subunit beta 1 (IL12RB1) is a type I transmembrane protein that belongs to the hemopoietin receptor superfamily. IL12RB1 can spontaneously form homodimers and -oligomers, which are able to bind IL12 with only low affinity. IL12 high affinity receptor complex is composed of two subunits designated IL12RB1 and IL12RB2. While IL12RB1 interacts with the IL-12p40 subunit, IL-12p35 is mainly connecting with IL12RB2. This receptor chain is also responsible for transmitting the IL12 signal into the cell. IL12RB1, to the contrary, is also part of the IL23R, where it interacts with the p40 subunit of IL23. IL12RB1 is expressed in activated T cells, NK cells and B cells.

## Basic Information

### Description

Recombinant Human IL-12RB1/IL-12 R beta 1/IL-12RB Protein is produced by Human cells expression system. The target protein is expressed with sequence (Cys24-Glu540) of human IL-12RB1/IL-12 R beta 1/IL-12RB (Accession #P42701) fused with an Fc tag at the C-terminus.

### Bio-Activity

### Storage

Store the lyophilized protein at -20°C to -80 °C for long term. After reconstitution, the protein solution is stable at -20 °C for 3 months, at 2-8 °C for up to 1 week. Avoid repeated freeze/thaw cycles.

## Product Information

Source	Purification
HEK293 cells	> 95% by SDS-PAGE.

### Endotoxin

< 1 EU/μg of the protein by LAL method.

### Formulation

Lyophilized from a 0.2 μm filtered solution of PBS, pH7.4. Contact us for customized product form or formulation.

### Reconstitution

Centrifuge the tube before opening. Reconstitute to a concentration of 0.1-0.5 mg/mL in sterile distilled water. Avoid vortex or vigorously pipetting the protein. For long term storage, it is recommended to add a carrier protein or stabilizer (e.g. 0.1% BSA, 5% HSA, 10% FBS or 5% Trehalose), and aliquot the reconstituted protein solution to minimize freeze-thaw cycles.

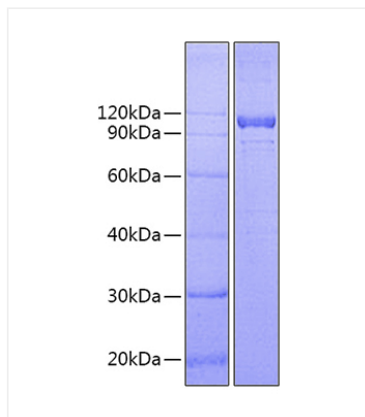
## Contact



[www.abclonal.com](http://www.abclonal.com)

## Validation Data

---



Recombinant Human IL12RB1/CD212  
Protein was determined by SDS-PAGE under  
reducing conditions with Coomassie Blue.