

RP00645

Leader in Biomolecular Solutions for Life Science



# Recombinant Human/Mouse/Rat mature TGF-beta 3 Protein

Catalog No.: RP00645

Recombinant

## Sequence Information

Species	Gene ID	Swiss Prot
HEK293 cells	7043	P10600

### Tags

No tag

### Synonyms

TGFB3;ARVD;ARVD1;LDS5;RNHF;TGF-beta3

## Background

Transforming growth factor beta 3(TGFB3) is a member of a TGF -  $\beta$  superfamily which is defined by their structural and functional similarities. TGFB3 is secreted as a complex with LAP. This latent form of TGFB3 becomes active upon cleavage by plasmin, matrix metalloproteases, thrombospondin -1, and a subset of integrins. It binds with high affinity to TGF-  $\beta$  RII, a type II serine/threonine kinase receptor. TGFB3 is involved in cell differentiation, embryogenesis and development. It is believed to regulate molecules involved in cell adhesion and extracellular matrix (ECM) formation during the process of palate development. Without TGF- $\beta$ 3, mammals develop a deformity known as a cleft palate.

## Basic Information

### Description

Recombinant Human/Mouse/Rat TGF-beta 3 Protein is produced by Human cells expression system. The target protein is expressed with sequence (Ala301-Ser412(Tyr340Phe)) of human TGF-beta 3/TGFB3 (Accession #P10600).

### Bio-Activity

### Storage

Store the lyophilized protein at -20°C to -80 °C for long term. After reconstitution, the protein solution is stable at -20 °C for 3 months, at 2-8 °C for up to 1 week. Avoid repeated freeze/thaw cycles.

## Product Information

Source	Purification
	> 95% by SDS-PAGE.

### Endotoxin

< 1 EU/ $\mu$ g of the protein by LAL method.

### Formulation

Lyophilized from a 0.2  $\mu$ m filtered solution of 50mM Glycine-HCl, 150mM NaCl, pH 2.5. Contact us for customized product form or formulation.

### Reconstitution

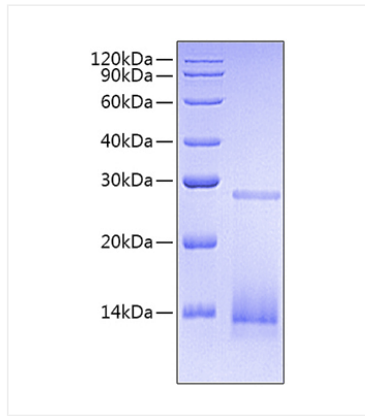
Centrifuge the tube before opening. Reconstitute to a concentration of 0.1-0.5 mg/mL in sterile distilled water. Avoid vortex or vigorously pipetting the protein. For long term storage, it is recommended to add a carrier protein or stabilizer (e.g. 0.1% BSA, 5% HSA, 10% FBS or 5% Trehalose), and aliquot the reconstituted protein solution to minimize freeze-thaw cycles.

## Contact

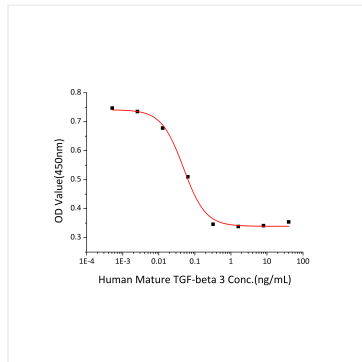


[www.abclonal.com](http://www.abclonal.com)

## Validation Data



Recombinant Human/Mouse/Rat TGF-beta 3 Protein was determined by SDS-PAGE under reducing conditions with Coomassie Blue.



Measured by its ability to inhibit the IL-4-dependent proliferation of HT-2 mouse T cells. The  $ED_{50}$  for this effect is 24.2-96.6 pg/mL, corresponding to a specific activity of  $1.04 \times 10^7 \sim 4.17 \times 10^7$  units/mg.