

RP00594

Leader in Biomolecular Solutions for Life Science



Recombinant Human REG4/GISP/RELP/Regenerating islet-derived protein 4 Protein

Catalog No.: RP00594

Recombinant

Sequence Information

Species	Gene ID	Swiss Prot
Human	83998	Q9BYZ8

Tags

C-6×His

Synonyms

REG4;GISP;REG-IV;RELP

Product Information

Source

HEK293 cells

Purification

> 95% by SDS-PAGE.

Endotoxin

< 1 EU/μg of the protein by LAL method.

Formulation

Lyophilized from a 0.2 μm filtered solution of 20mM PB, 150mM NaCl, pH 7.2. Contact us for customized product form or formulation.

Reconstitution

Reconstitute to a concentration of 0.1-0.5 mg/mL in sterile distilled water.

Background

REG4 is a secreted protein containing one C-type lectin domain, highly expressed in the gastrointestinal tract, including jejunum, ileum, appendix, pancreas and small intestine. REG4 can be up-regulated by mucosal injury from active Crohn's disease or ulcerative colitis. In the acid environment, REG4 can maintain carbohydrate recognition activity. REG4 may be involved in inflammatory and metaplastic response of the gastrointestinal epithelium.

Basic Information

Description

Recombinant Human REG4/GISP/RELP/Regenerating islet-derived protein 4 Protein is produced by Human cells expression system. The target protein is expressed with sequence (Asp23-Pro158) of human REG4/GISP/RELP/Regenerating islet-derived protein 4 (Accession #Q9BYZ8) fused with a 6×His tag at the C-terminus.

Bio-Activity

Storage

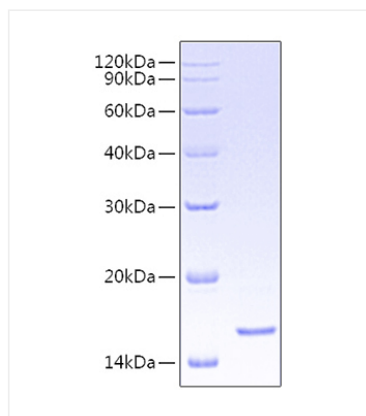
Store the lyophilized protein at -20 °C to -80 °C for long term. After reconstitution, the protein solution is stable at -20 °C for 3 months, at 2-8 °C for up to 1 week. Avoid repeated freeze/thaw cycles.

Contact



www.abclonal.com

Validation Data



Recombinant Human
REG4/GISP/REL/Regenerating islet-derived
protein 4 Protein was determined by SDS-
PAGE under reducing conditions with
Coomassie Blue.