

Recombinant Human B2M/ β 2-Microglobulin/beta 2 Microglobulin Protein

Catalog No.: RP00531 **Recombinant**

Sequence Information

Species	Gene ID	Swiss Prot
Human	567	P61769

Tags

C-6×His

Synonyms

B2M; IMD43; beta-2-microglobulin; IMD43

Product Information

Source	Purification
HEK293 cells	> 95% by SDS-PAGE.

Endotoxin

< 1 EU/ μ g of the protein by LAL method.

Formulation

Lyophilized from a 0.2 μ m filtered solution of 20mM PB, 150mM NaCl, pH 7.2. Contact us for customized product form or formulation.

Reconstitution

Reconstitute to a concentration of 0.1-0.5 mg/mL in sterile distilled water.

Background

β 2-Microglobulin (B2M) is a secreted protein with 1 Ig-like C1-type (immunoglobulin-like) domain which belongs to the beta-2-microglobulin family. B2M component of major histocompatibility complex (MHC) class I molecules, involved in the presentation of peptide antigens to the immune system. Polymers of beta 2-microglobulin can be found in tissues from patients on long-term hemodialysis. B2M is a protein found on the surface of many cells and plentiful on the surface of white blood cells. Serum B2M concentration is increased in renal diseases, various malignant diseases and some inflammatory and autoimmune disorders. B2M may adopt the fibrillar configuration of amyloid in certain pathologic states. The capacity to assemble into amyloid fibrils is concentration dependent. B2M has been shown as a marker for monitoring inflammatory disease activity and it appears likely to have a destructive role in amyloidosis-related arthritis. B2M might be involved in the OA (osteoarthritis) pathogenesis. Defects in B2M are the cause of hypercatabolic hypoproteinemia. Affected individuals show marked reduction in serum concentrations of immunoglobulin and albumin, probably due to rapid degradation. B2M could be a potential therapeutic target in ovarian cancer.

Basic Information

Description

Recombinant Human B2M/ β 2-Microglobulin/beta 2 Microglobulin Protein is produced by Human cells expression system. The target protein is expressed with sequence (Ile21-Met119) of human B2M/ β 2-Microglobulin/beta 2 Microglobulin (Accession #P61769) fused with a 6×His tag at the C-terminus.

Bio-Activity

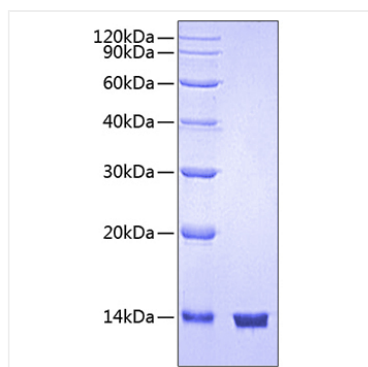
Storage

Store the lyophilized protein at -20°C to -80 °C for long term. After reconstitution, the protein solution is stable at -20 °C for 3 months, at 2-8 °C for up to 1 week. Avoid repeated freeze/thaw cycles.

Contact

 | www.abclonal.com

Validation Data



Recombinant Human B2M/ β 2-Microglobulin/ β 2 Microglobulin Protein was determined by SDS-PAGE under reducing conditions with Coomassie Blue.