

RP00423

Leader in Biomolecular Solutions for Life Science



Recombinant Human Lumican/LUM Protein

Catalog No.: RP00423

Recombinant

Sequence Information

Species	Gene ID	Swiss Prot
Human	4060	P51884

Tags

C-6×His

Synonyms

LDC; SLRR2D;LUM;SLRR2D;lumican

Product Information

Source	Purification
HEK293 cells	> 95% by SDS-PAGE.

Endotoxin

< 1 EU/μg of the protein by LAL method.

Formulation

Lyophilized from a 0.2 μm filtered solution of 20 mM PB, 150 mM NaCl, 1 mM EDTA, pH 7.2. Contact us for customized product form or formulation.

Reconstitution

Reconstitute to a concentration of 0.1-0.5 mg/mL in sterile distilled water.

Background

This protein belongs a member of the small leucine-rich proteoglycan (SLRP) family that includes decorin, biglycan, fibromodulin, keratocan, epiphykan, and osteoglycin. In these bifunctional molecules, the protein moiety binds collagen fibrils and the highly charged hydrophilic glycosaminoglycans regulate interfibrillar spacings. Lumican is the major keratan sulfate proteoglycan of the cornea but is also distributed in interstitial collagenous matrices throughout the body. Lumican may regulate collagen fibril organization and circumferential growth, corneal transparency, and epithelial cell migration and tissue repair.

Basic Information

Description

Recombinant Human Lumican/LUM Protein is produced by Human Cell expression system. The target protein is expressed with sequence (Gln19-Asn338) of human Lumican/LUM (Accession #P51884) fused with a 6×His tag at the C-terminus.

Bio-Activity

Measured by the ability of the immobilized protein to support the adhesion of BCE C/D-1b bovine corneal endothelial cells. When 5×10^4 cells per well are added to Recombinant Human Lumican/LUM coated plates (10 μg/mL, 100 μL/well), >35% will adhere after 50 minutes at 37 °C.

Storage

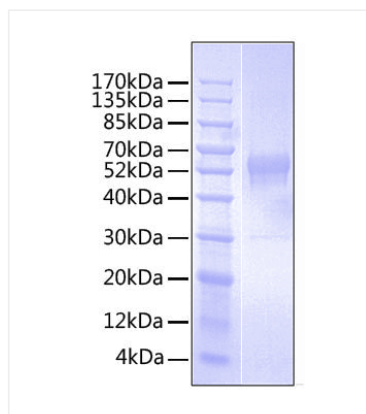
Store the lyophilized protein at -20°C to -80 °C for long term. After reconstitution, the protein solution is stable at -20 °C for 3 months, at 2-8 °C for up to 1 week. Avoid repeated freeze/thaw cycles.

Contact



www.abclonal.com

Validation Data



Recombinant protein Human Lumican/LUM was determined by SDS-PAGE under reducing conditions with Coomassie Blue, showing a band at 60 kDa.