

RP00416

Leader in Biomolecular Solutions for Life Science



# Recombinant Human SCF/KITLG Protein

Catalog No.: RP00416

Recombinant

## Sequence Information

| Species | Gene ID | Swiss Prot |
|---------|---------|------------|
| Human   | 4254    | P21583     |

### Tags

No tag

### Synonyms

KITLG;DCUA;DFNA69;FPH2;FPHH;KL-1;Kit  
I;MGF;SCF;SF;SHEP7

## Product Information

### Source

<I>E. coli</I>

### Purification

> 95% by SDS-  
PAGE.

### Endotoxin

< 1 EU/μg of the protein by LAL method.

### Formulation

Lyophilized from a 0.2 μm filtered  
solution of 20 mM PB, 150 mM NaCl, pH  
7.0. Contact us for customized product  
form or formulation.

### Reconstitution

Reconstitute to a concentration of  
0.1-0.5 mg/mL in sterile distilled water.

## Background

This protein belongs the ligand of the tyrosine-kinase receptor encoded by the KIT locus. This ligand is a pleiotropic factor that acts in utero in germ cell and neural cell development, and hematopoiesis, all believed to reflect a role in cell migration. In adults, it functions pleiotropically, while mostly noted for its continued requirement in hematopoiesis. Two transcript variants encoding different isoforms have been found for this gene.

## Basic Information

### Description

Recombinant Human SCF/KITLG Protein is produced by <I>E. coli</I> expression system. The target protein is expressed with sequence (Glu26-Ala189) of human SCF/KITLG (Accession #P21583) fused with an initial Met at the N-terminus.

### Bio-Activity

Measured by the dose-dependent stimulation of Human TF-1 cells. The ED<sub>50</sub> is less than 2 ng/mL. Specific Activity of 5.0 x 10<sup>5</sup> IU/mg.

### Storage

Store the lyophilized protein at -20°C to -80 °C for long term. After reconstitution, the protein solution is stable at -20 °C for 3 months, at 2-8 °C for up to 1 week. Avoid repeated freeze/thaw cycles.

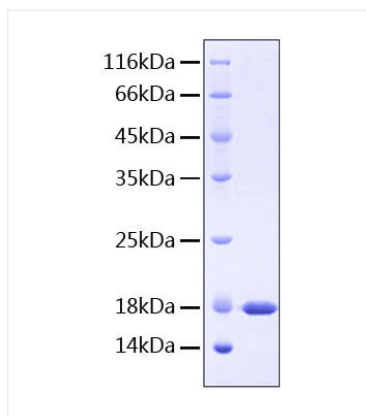
## Contact



[www.abclonal.com](http://www.abclonal.com)

## Validation Data

---



Recombinant protein Human SCF/KITLG was determined by SDS-PAGE under reducing conditions with Coomassie Blue, showing a band at 18 kDa.