

# Recombinant Human EphA7 Protein

Catalog No.: RP00360 **Recombinant**

## Sequence Information

Species	Gene ID	Swiss Prot
Human	2045	Q15375

### Tags

C-6xHis

### Synonyms

EPHA7;EHK-3;EHK3;EK11;HEK11

## Product Information

Source	Purification
HEK293 cells	> 95% by SDS-PAGE.

### Endotoxin

< 1 EU/μg of the protein by LAL method.

### Formulation

Lyophilized from a 0.2 μm filtered solution of 20 mM PB, 150 mM NaCl, pH 7.2. Contact us for customized product form or formulation.

### Reconstitution

Reconstitute to a concentration of 0.1-0.5 mg/mL in sterile distilled water.

## Background

This protein belongs to the ephrin receptor subfamily of the protein-tyrosine kinase family. EPH and EPH-related receptors have been implicated in mediating developmental events, particularly in the nervous system. Receptors in the EPH subfamily typically have a single kinase domain and an extracellular region containing a Cys-rich domain and 2 fibronectin type III repeats. The ephrin receptors are divided into 2 groups based on the similarity of their extracellular domain sequences and their affinities for binding ephrin-A and ephrin-B ligands. Increased expression of this gene is associated with multiple forms of carcinoma. Alternative splicing results in multiple transcript variants.

## Basic Information

### Description

Recombinant Human EphA7 Protein is produced by Human Cell expression system. The target protein is expressed with sequence (Gln28-Ile556) of human EphA7 (Accession #Q15375) fused with a 6xHis tag at the C-terminus.

### Bio-Activity

### Storage

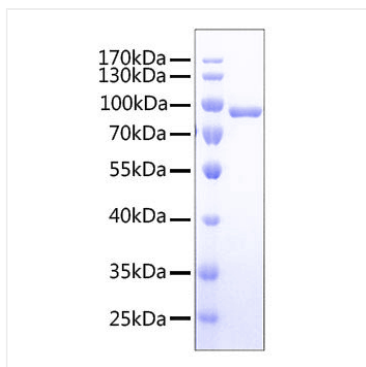
Store the lyophilized protein at -20°C to -80 °C for long term. After reconstitution, the protein solution is stable at -20 °C for 3 months, at 2-8 °C for up to 1 week. Avoid repeated freeze/thaw cycles.

## Contact

 | [www.abclonal.com](http://www.abclonal.com)

## Validation Data

---



Recombinant protein Human EphA7 was determined by SDS-PAGE under reducing conditions with Coomassie Blue, showing a band at 80 kDa.