

RP00293

Leader in Biomolecular Solutions for Life Science



# Recombinant Human SELE/E-selectin/CD62E Protein

Catalog No.: RP00293

Recombinant

## Sequence Information

Species	Gene ID	Swiss Prot
Human	6401	P16581

### Tags

C-His

### Synonyms

SELE;CD62E;ELAM;ELAM1;ESEL;LECAM2

## Product Information

Source	Purification
HEK293 cells	> 97% by SDS-PAGE.

### Endotoxin

Please contact us for more information.

### Formulation

Lyophilized from a 0.22 µm filtered solution of PBS, pH 7.4. Contact us for customized product form or formulation.

### Reconstitution

Centrifuge the vial before opening. Reconstitute to a concentration of 0.1-0.5 mg/mL in sterile distilled water. Avoid vortex or vigorously pipetting the protein. For long term storage, it is recommended to add a carrier protein or stabilizer (e.g. 0.1% BSA, 5% HSA, 10% FBS or 5% Trehalose), and aliquot the reconstituted protein solution to minimize freeze-thaw cycles.

## Background

The protein is found in cytokine-stimulated endothelial cells and is thought to be responsible for the accumulation of blood leukocytes at sites of inflammation by mediating the adhesion of cells to the vascular lining. It exhibits structural features such as the presence of lectin- and EGF-like domains followed by short consensus repeat (SCR) domains that contain 6 conserved cysteine residues. These proteins are part of the selectin family of cell adhesion molecules. Adhesion molecules participate in the interaction between leukocytes and the endothelium and appear to be involved in the pathogenesis of atherosclerosis.

## Basic Information

### Description

Recombinant Human SELE/E-selectin/CD62E Protein is produced by HEK293 expression system. The target protein is expressed with sequence (Trp22-Pro556) of human E-Selectin/CD62E (Accession #NP\_000441.2) fused with a 6×His tag at the C-terminus.

### Bio-Activity

Measured by the ability of the immobilized protein to support the adhesion of U937 human histiocytic lymphoma cells. When 5 x 10<sup>4</sup> cells/well are added to human E-Selectin/Fc Chimera coated plates (2 µg/mL with 100 µL/well), approximately 40-50% will adhere after 1 hour incubation at 37°C.

### Storage

Store the lyophilized protein at -20°C to -80 °C for long term. After reconstitution, the protein solution is stable at -20 °C for 3 months, at 2-8 °C for up to 1 week. Avoid repeated freeze/thaw cycles.

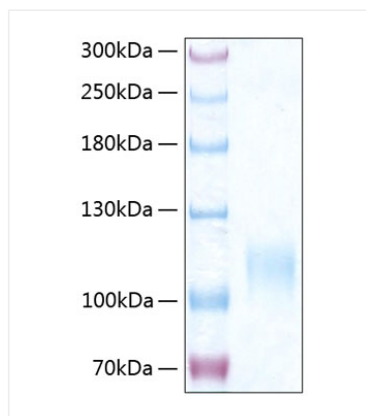
## Contact



[www.abclonal.com](http://www.abclonal.com)

## Validation Data

---



Recombinant Human SELE/E-selectin/CD62E  
Protein was determined by SDS-PAGE with  
Coomassie Blue, showing a band at 110-120  
kDa.