

RP00111

Leader in Biomolecular Solutions for Life Science



# Recombinant Human Erythropoietin R/EPO-R Protein

Catalog No.: RP00111

Recombinant

## Sequence Information

Species	Gene ID	Swiss Prot
Human	2057	P19235

### Tags

C-hFc&His

### Synonyms

EPOR;EPO-R

## Background

This protein is erythropoietin receptor which is a member of the cytokine receptor family. Upon erythropoietin binding, this receptor activates Jak2 tyrosine kinase which activates different intracellular pathways including: Ras/MAP kinase, phosphatidylinositol 3-kinase and STAT transcription factors. The stimulated erythropoietin receptor appears to have a role in erythroid cell survival. Defects in the erythropoietin receptor may produce erythroleukemia and familial erythrocytosis. Dysregulation of this gene may affect the growth of certain tumors. Alternate splicing results in multiple transcript variants.

## Basic Information

### Description

Recombinant Human Erythropoietin R/EPO-R Protein is produced by HEK293 expression system. The target protein is expressed with sequence (Ala25-Pro250) of human EPO Receptor/EPOR (Accession #NP\_000112.1) fused with an Fc, 6xHis tag at the C-terminus.

### Bio-Activity

Measured by its binding ability in a functional ELISA. Immobilized Human EPO Protein at 2µg/mL (100 µL/well) can bind EPOR with a linear range of 0.24-12.02 ng/mL.

### Storage

Store the lyophilized protein at -20°C to -80 °C for long term. After reconstitution, the protein solution is stable at -20 °C for 3 months, at 2-8 °C for up to 1 week. Avoid repeated freeze/thaw cycles.

## Product Information

Source	Purification
HEK293 cells	> 95% by SDS-PAGE.

### Endotoxin

< 0.1 EU/µg of the protein by LAL method.

### Formulation

Lyophilized from a 0.22 µm filtered solution of PBS, 0.1mM EDTA and 0.1% CHAPS, pH 7.4. Contact us for customized product form or formulation.

### Reconstitution

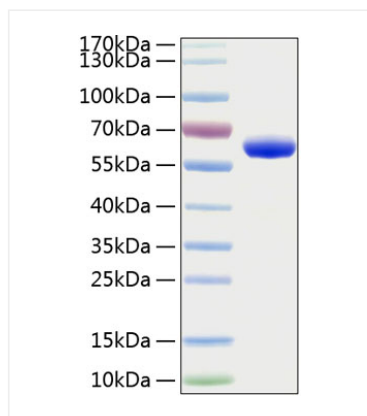
Centrifuge the vial before opening. Reconstitute to a concentration of 0.1-0.5 mg/mL in sterile distilled water. Avoid vortex or vigorously pipetting the protein. For long term storage, it is recommended to add a carrier protein or stabilizer (e.g. 0.1% BSA, 5% HSA, 10% FBS or 5% Trehalose), and aliquot the reconstituted protein solution to minimize free-thaw cycles.

## Contact

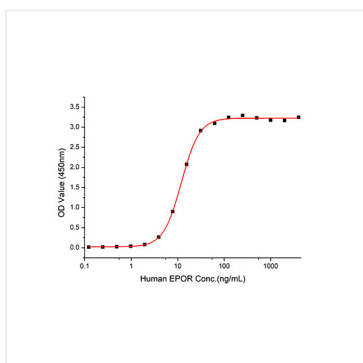


[www.abclonal.com](http://www.abclonal.com)

## Validation Data



Recombinant Human Erythropoietin R/EPO-R Protein was determined by SDS-PAGE with Coomassie Blue, showing a band at 55-60 kDa.



Immobilized Human EPO Protein at 2 $\mu$ g/mL (100  $\mu$ L/well) can bind EPOR with a linear range of 0.24-12.02 ng/mL.