

Recombinant Human PD-1 Protein

Catalog No	RP00067	Category	Protein
Description	Recombinant Human PD-1 Protein is produced by HEK293 expression system. The target protein is expressed with sequence (Leu25-Thr168) of human PD-1 (Accession #NP_005009.2) fused with a 6×His tag at the C-terminus.		
Bio-Activity	Measured by its binding ability in a functional ELISA. When Recombinant Human PD-1 is immobilized at 1 µg/mL (100 µL/well), the concentration of Recombinant Human B7-H1/PD-L1 Fc Chimera that produces 50% of the optimal binding response is approximately 0.3-1.8 µg/mL.		

Sequence Information

Species	Human	Gene ID	5133
Tags	6×His tag at the C-terminus	Swiss Prot	Q15116
Synonyms	CD279;hPD-1;hPD-I;hSLE1;PD-1;PD1;SLEB2		
AA Sequence	LDSPPDRPWNPPPTFSPALLVVTEGDNATFTCSFSNTSESVFLNWYRMSPSNQTDKLAAPFE DRSQPGQDCFRVTQLPNGRDFHMSVVRARRNDSGTYLCGAISLAPKAQIKESLRAELRV TERRAEVPTAHPSPSPRPAGQFQT		

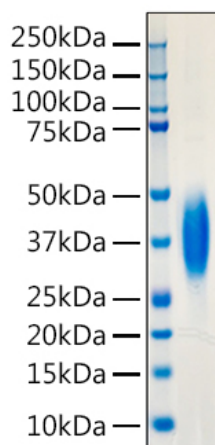
Product information

Source	HEK293 cells
Purity	> 97% by SDS-PAGE.
Endotoxin	< 0.1 EU/µg of the protein by LAL method.
Formulation	Lyophilized from a 0.22 µm filtered solution of PBS, pH 7.4.
Reconstitution	Reconstitute to a concentration of 0.1-0.5 mg/mL in sterile distilled water.
Storage	Store the lyophilized protein at -20°C to -80 °C for long term. After reconstitution, the protein solution is stable at -20 °C for 3 months, at 2-8 °C for up to 1 week. Avoid repeated freeze/thaw cycles.

Background

This protein is a cell surface membrane protein of the immunoglobulin superfamily. This protein is expressed in pro-B-cells and is thought to play a role in their differentiation. In mice, expression of this gene is induced in the thymus when anti-CD3 antibodies are injected and large numbers of thymocytes undergo apoptosis. Mice deficient for this gene bred on a BALB/c background developed dilated cardiomyopathy and died from congestive heart failure.

SDS-PAGE



Recombinant Human PD-1 was determined by SDS-PAGE under reducing conditions with Coomassie Blue, showing a band at 32-44 kDa.

Bioactivity