

RP00061

Leader in Biomolecular Solutions for Life Science



# Recombinant Human ISG15 Protein

Catalog No.: RP00061

Recombinant

## Sequence Information

Species	Gene ID	Swiss Prot
Human	9636	P05161

### Tags

No tag

### Synonyms

G1P2; IFI15; IMD38; IP17; UCRP;  
hUCRP; ISG15; IFI15; IMD38; IP17; UCRP; hUCRP

## Product Information

### Source

<I>E. coli</I>

### Purification

> 97% by SDS-PAGE.

### Endotoxin

< 1.0 EU/μg of the protein by LAL method.

### Formulation

Lyophilized from a 0.22 μm filtered solution of 50mM HEPES, 100mM NaCl, pH 7.5. Contact us for customized product form or formulation.

### Reconstitution

Centrifuge the vial before opening. Reconstitute to a concentration of 0.1-0.5 mg/mL in sterile distilled water. Avoid vortex or vigorously pipetting the protein. For long term storage, it is recommended to add a carrier protein or stabilizer (e.g. 0.1% BSA, 5% HSA, 10% FBS or 5% Trehalose), and aliquot the reconstituted protein solution to minimize free-thaw cycles.

## Contact



[www.abclonal.com](http://www.abclonal.com)

## Background

The protein is a ubiquitin-like protein that is conjugated to intracellular target proteins upon activation by interferon-alpha and interferon-beta. Several functions have been ascribed to the encoded protein, including chemotactic activity towards neutrophils, direction of ligated target proteins to intermediate filaments, cell-to-cell signaling, and antiviral activity during viral infections. While conjugates of this protein have been found to be noncovalently attached to intermediate filaments, this protein is sometimes secreted.

## Basic Information

### Description

Recombinant Human ISG15 Protein is produced by <I>E. coli</I> expression system. The target protein is expressed with sequence (Gly2-Gly157) of human ISG15 (Accession #NP\_005092.1).

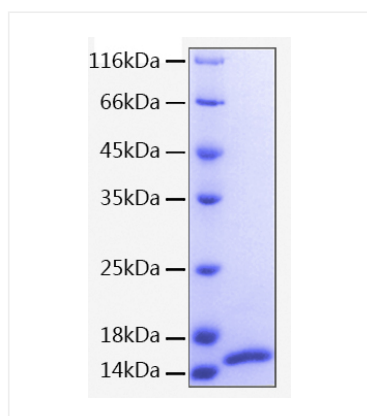
### Bio-Activity

### Storage

Store the lyophilized protein at -20°C to -80 °C for long term. After reconstitution, the protein solution is stable at -20 °C for 3 months, at 2-8 °C for up to 1 week. Avoid repeated freeze/thaw cycles.

## Validation Data

---



Recombinant Human ISG15 Protein was determined by SDS-PAGE with Coomassie Blue, showing a band at 16 kDa.