

RP00051

Leader in Biomolecular Solutions for Life Science



Recombinant Human FKBP1A/FKBP12 Protein

Catalog No.: RP00051

Recombinant

Sequence Information

Species	Gene ID	Swiss Prot
Human	2280	P62942

Tags

No tag

Synonyms

FKBP-12; FKBP-1A; FKBP1; FKBP12;
PKC12; PKC12;
PPIASE;FKBP1A;FKBP-1A;FKBP1;FKBP12;P
KC12;PKC12;PPIASE

Product Information

Source	Purification
<I>E. coli</I>	> 90% by SDS- PAGE.

Endotoxin

< 0.1 EU/μg of the protein by LAL
method.

Formulation

Lyophilized from a 0.22 μm filtered
solution of 20mM Tris, 150mM NaCl, pH
8.0. Contact us for customized product
form or formulation.

Reconstitution

Centrifuge the vial before opening.
Reconstitute to a concentration of
0.1-0.5 mg/mL in sterile distilled water.
Avoid vortex or vigorously pipetting the
protein. For long term storage, it is
recommended to add a carrier protein or
stabilizer (e.g. 0.1% BSA, 5% HSA, 10%
FBS or 5% Trehalose), and aliquot the
reconstituted protein solution to
minimize free-thaw cycles.

Background

The protein is a member of the immunophilin protein family, which play a role in immunoregulation and basic cellular processes involving protein folding and trafficking. The protein is a cis-trans prolyl isomerase that binds the immunosuppressants FK506 and rapamycin. It interacts with several intracellular signal transduction proteins including type I TGF-beta receptor. It also interacts with multiple intracellular calcium release channels, and coordinates multi-protein complex formation of the tetrameric skeletal muscle ryanodine receptor.

Basic Information

Description

Recombinant Human FKBP1A/FKBP12 Protein is produced by <I>E. coli</I> expression system. The target protein is expressed with sequence (Met1-Glu108) of human FKBP12 (Accession #NP_000792.1).

Bio-Activity

Storage

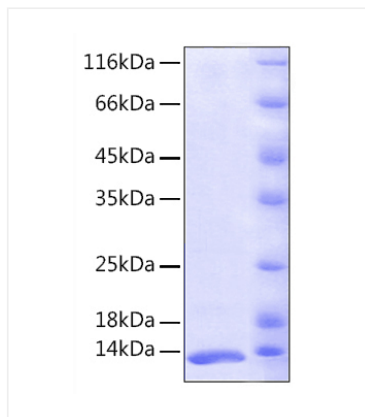
Store the lyophilized protein at -20°C to -80 °C for long term.
After reconstitution, the protein solution is stable at -20 °C for 3 months, at 2-8 °C for up to 1 week. Avoid repeated freeze/thaw cycles.

Contact



www.abclonal.com

Validation Data



Recombinant Human FKBP1A/FKBP12
Protein was determined by SDS-PAGE with
Coomassie Blue, showing a band at 14 kDa.