

Recombinant Human UBE2L3 Protein

Catalog No.: RP00025LQ **Recombinant**

Sequence Information

Species	Gene ID	Swiss Prot
Human	7332	P68036

Tags

C-His

Synonyms

UBE2L3;E2-F1;L-
UBC;UBCH7;UbcM4;Ube2L3 / UBCH7

Product Information

Source	Purification
<i>E. coli</i>	> 95% by SDS- PAGE.

Endotoxin

Please contact us for more
information.

Formulation

Supplied in 50mM HEPES, 200mM NaCl,
10%glycerol, 1mM TCEP, pH
7.0Contact us for customized product
form or formulation.

Reconstitution

Background

Ubiquitin-conjugating Enzyme E2L 3 (UBE2L3), also known as Ubiquitin-conjugating Enzyme H7 (Ubch7), is a member of the Ubiquitin-conjugating (E2) enzyme family (1). The human Ubch7 protein shares 100% amino acid (aa) sequence identity with the mouse and rat orthologs. UBE2L3 is catalytically active with HECT and RBR domain-containing families of Ubiquitin ligases (E3s). UBE2L3 localizes to both the nucleus and cytoplasm in human cells. UBE2L3 depletion results in an extended S phase and a reduced rate of proliferation, suggesting that it may play a role in the cell cycle. In humans, single nucleotide polymorphisms in UBE2L3 are associated with systemic lupus erythematosus and Crohn's disease, suggesting that Ubch7 is important for proper immune system function.

Basic Information

Description

Recombinant Human UBE2L3 Protein is produced by *E. coli* expression system. The target protein is expressed with sequence (Met1-Asp154) of human UBE2L3 (Accession #NP_003338.1) fused with a 6xHis tag at the C-terminus.

Bio-Activity

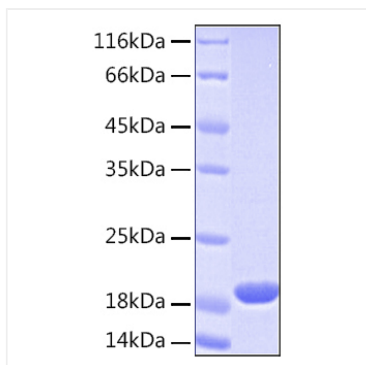
Storage

This product is stable at $\leq -70^{\circ}\text{C}$ for up to 1 year from the date of receipt. For optimal storage, aliquot into smaller quantities after centrifugation and store at recommended temperature. Avoid repeated freeze/thaw cycles.

Contact

| www.abclonal.com

Validation Data



Recombinant Human UBE2L3 Protein was determined by SDS-PAGE with Coomassie Blue, showing a band at 19 kDa.