

Recombinant Human S100-A12 Protein

Catalog No.: RP00009 **Recombinant**

Sequence Information

Species	Gene ID	Swiss Prot
Human	6283	P80511

Tags

C-His

Synonyms

S100A12; CAAF1; CAGC; CGRP; ENRAGE; MRP-6; MRP6; p6

Product Information

Source	Purification
<i>E. coli</i>	> 97% by SDS-PAGE.

Endotoxin

< 0.1 EU/μg of the protein by LAL method.

Formulation

Lyophilized from a 0.22 μm filtered solution of PBS, pH 7.4. Contact us for customized product form or formulation.

Reconstitution

Centrifuge the vial before opening. Reconstitute to a concentration of 0.1-0.5 mg/mL in sterile distilled water. Avoid vortex or vigorously pipetting the protein. For long term storage, it is recommended to add a carrier protein or stabilizer (e.g. 0.1% BSA, 5% HSA, 10% FBS or 5% Trehalose), and aliquot the reconstituted protein solution to minimize freeze-thaw cycles.

Background

The protein is a member of the S100 family of proteins containing 2 EF-hand calcium-binding motifs. S100 proteins are localized in the cytoplasm and nucleus of a wide range of cells, and involved in the regulation of a number of cellular processes such as cell cycle progression and differentiation. S100 proteins include at least 13 members which are located as a cluster on chromosome 1q21. This protein is proposed to be involved in specific calcium-dependent signal transduction pathways and its regulatory effect on cytoskeletal components may modulate various neutrophil activities. The protein includes an antimicrobial peptide which has antibacterial activity.

Basic Information

Description

Recombinant Human S100-A12 Protein is produced by *E. coli* expression system. The target protein is expressed with sequence (Met1-Glu92) of human S100A12 (Accession #NP_005612.1) fused with a 6xHis tag at the C-terminus.

Bio-Activity

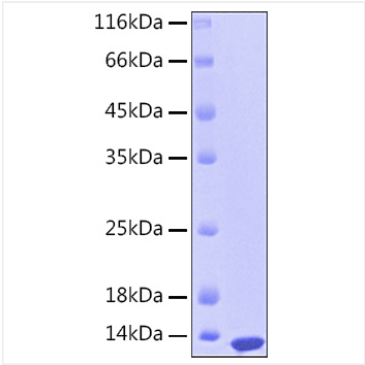
Measured by its binding ability in a functional ELISA. Immobilized Human S100A12 Protein at 2 μg/mL (100 μL/well) can bind AGER with a linear range of 1.95-14.13 ng/mL.

Storage

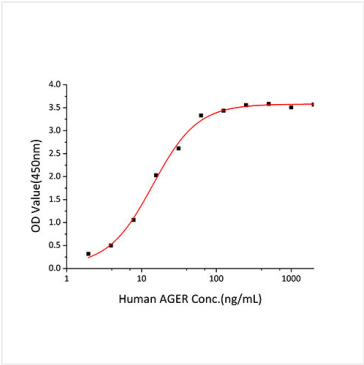
Store the lyophilized protein at -20°C to -80 °C for long term. After reconstitution, the protein solution is stable at -20 °C for 3 months, at 2-8 °C for up to 1 week. Avoid repeated freeze/thaw cycles.

Contact

Validation Data



Recombinant Human S100-A12 Protein was determined by SDS-PAGE with Coomassie Blue, showing a band at approximately 10 kDa.



Immobilized Recombinant Human S100-A12 Protein at 2µg/mL (100 µL/well) can bind AGER with a linear range of 1.95-14.13ng/mL.