

[One Step] MIF antibody Kit

Catalog No.: RK05730

Basic Information

Observed MW

Calculated MW

Category

Primary antibody

Background

Component

Catalog No.	Product Name	Applications	Cross-Reactivity
AS014	HRP Goat Anti-Rabbit IgG (H+L)	ELISA, WB, IHC-P	
A1391	MIF Rabbit pAb	ELISA, WB	Human, Mouse, Rat

Recommended Dilutions

AS014 ELISA 1:5000 - 1:10000

A1391 WB 1:500 - 1:1000

For more information please visit
www.abclonal.com

Product Information

Source **Isotype**

Purification

Storage

Contact

 | www.abclonal.com

Immunogen Information

Gene ID

Swiss Prot

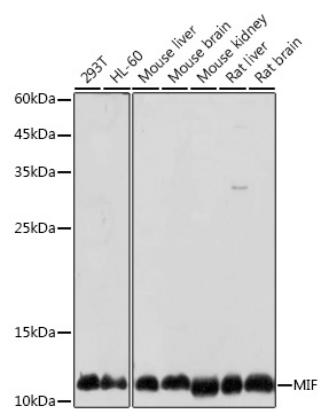
Immunogen

Rabbit IgG

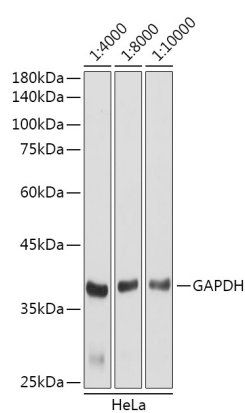
Recombinant fusion protein containing a sequence corresponding to amino acids 1-115 of human MIF (NP_002406.1).

Synonyms

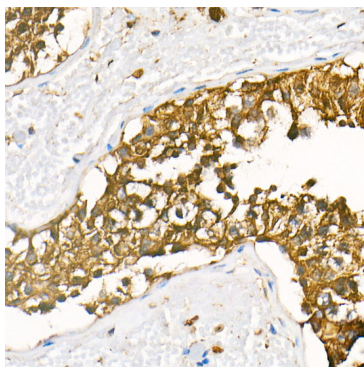
Validation Data



Western blot analysis of extracts of various cell lines, using MIF antibody (A1391) at 1:1000 dilution.
Secondary antibody: HRP Goat Anti-Rabbit IgG (H+L) (AS014) at 1:10000 dilution.
Lysates/proteins: 25µg per lane.
Blocking buffer: 3% nonfat dry milk in TBST.
Detection: ECL Basic Kit (RM00020).
Exposure time: 10s.



Western blot analysis of lysates from HeLa cells,using GAPDH (AC001) antibody as the primary antibody at dilution of 1:80000.
Secondary antibody: using HRP Goat Anti-Rabbit IgG (H+L) antibody (AS014) at 1:4000-1:10000 dilution.
Lysates/proteins: 25µg per lane.
Blocking buffer: 3% nonfat dry milk in TBST.
Detection: ECL Basic Kit (RM00020).
Exposure time: 3s.



Immunohistochemistry analysis of HRP Goat Anti-Rabbit IgG (H+L) in paraffin-embedded human testis tissue using HRP Goat Anti-Rabbit IgG (H+L) (AS014) at a dilution of 1:100 (40x lens). High pressure antigen retrieval was performed with 0.01 M citrate buffer (pH 6.0) prior to IHC staining.