

# [One Step] VCP Antibody Kit

Catalog No.: RK05721

## Basic Information

Observed MW

Calculated MW

### Category

Primary antibody

## Background

### Component

Catalog No.	Product Name	Applications	Cross-Reactivity
AS014	HRP Goat Anti-Rabbit IgG (H+L)	ELISA, WB, IHC-P	
A13368	VCP Rabbit pAb	ELISA, WB, IHC-P, IF/ICC	Human, Mouse, Rat

## Recommended Dilutions

**AS014 ELISA** 1:5000 - 1:10000

**A13368 WB** 1:500 - 1:1000

For more information please visit  
[www.abclonal.com](http://www.abclonal.com)

## Product Information

**Source** **Isotype**

**Purification**

**Storage**

## Contact

 | [www.abclonal.com](http://www.abclonal.com)

## Immunogen Information

**Gene ID**

**Swiss Prot**

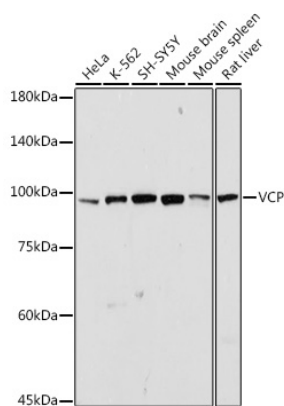
### Immunogen

Rabbit IgG

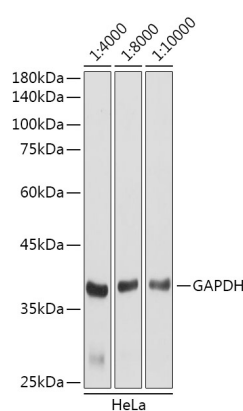
Recombinant fusion protein containing a sequence corresponding to amino acids 647-806 of human VCP (NP\_009057.1).

### Synonyms

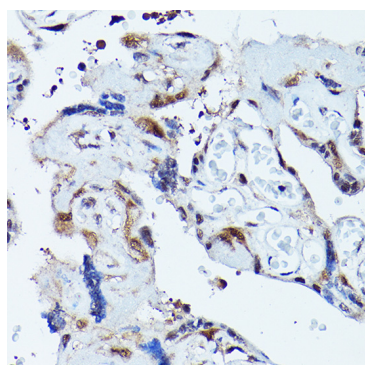
## Validation Data



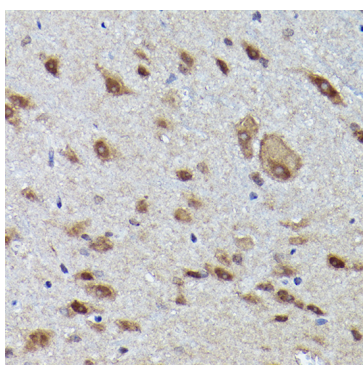
Western blot analysis of extracts of various cell lines, using VCP antibody (A13368) at 1:1000 dilution.  
 Secondary antibody: HRP Goat Anti-Rabbit IgG (H+L) (AS014) at 1:10000 dilution.  
 Lysates/proteins: 25µg per lane.  
 Blocking buffer: 3% nonfat dry milk in TBST.  
 Detection: ECL Basic Kit (RM00020).  
 Exposure time: 30s.



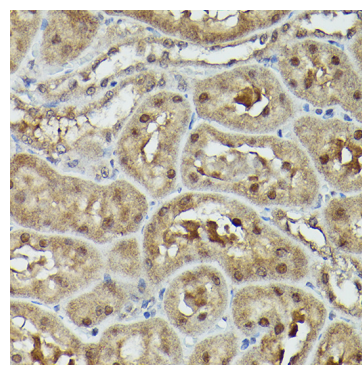
Western blot analysis of lysates from HeLa cells, using GAPDH (AC001) antibody as the primary antibody at dilution of 1:80000.  
 Secondary antibody: using HRP Goat Anti-Rabbit IgG (H+L) antibody (AS014) at 1:4000-1:10000 dilution.  
 Lysates/proteins: 25µg per lane.  
 Blocking buffer: 3% nonfat dry milk in TBST.  
 Detection: ECL Basic Kit (RM00020).  
 Exposure time: 3s.



Immunohistochemistry analysis of paraffin-embedded human placenta using VCP Rabbit pAb (A13368) at dilution of 1:100 (40x lens). Perform high pressure antigen retrieval with 10 mM citrate buffer pH 6.0 before commencing with IHC staining protocol.



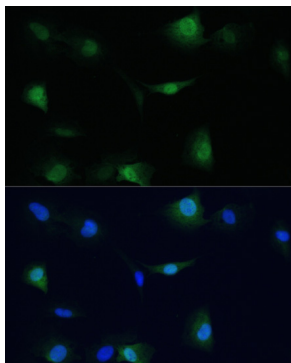
Immunohistochemistry analysis of paraffin-embedded mouse spinal cord using VCP Rabbit pAb (A13368) at dilution of 1:100 (40x lens). Perform high pressure antigen retrieval with 10 mM citrate buffer pH 6.0 before commencing with IHC staining protocol.



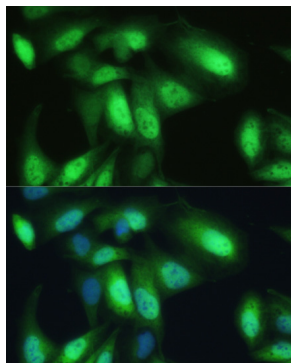
Immunohistochemistry analysis of paraffin-embedded rat kidney using VCP Rabbit pAb (A13368) at dilution of 1:100 (40x lens). Perform high pressure antigen retrieval with 10 mM citrate buffer pH 6.0 before commencing with IHC staining protocol.

## Validation Data

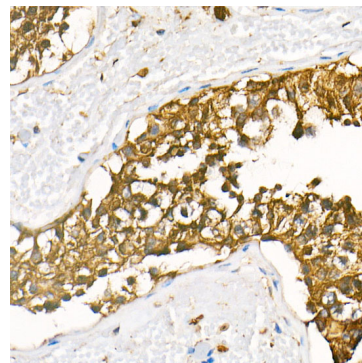
---



Immunofluorescence analysis of C6 cells using VCP antibody (A13368) at dilution of 1:100. Blue: DAPI for nuclear staining.



Immunofluorescence analysis of U-2 OS cells using VCP antibody (A13368) at dilution of 1:100. Blue: DAPI for nuclear staining.



Immunohistochemistry analysis of HRP Goat Anti-Rabbit IgG (H+L) in paraffin-embedded human testis tissue using HRP Goat Anti-Rabbit IgG (H+L) (AS014) at a dilution of 1:100 (40x lens). High pressure antigen retrieval was performed with 0.01 M citrate buffer (pH 6.0) prior to IHC staining.