

# [One Step] PYGB Antibody Kit

Catalog No.: RK05693

## Basic Information

Observed MW

Calculated MW

### Category

Primary antibody

## Background

### Component

| Catalog No. | Product Name                   | Applications          | Cross-Reactivity  |
|-------------|--------------------------------|-----------------------|-------------------|
| AS014       | HRP Goat Anti-Rabbit IgG (H+L) | ELISA, WB, IHC-P      |                   |
| A6402       | PYGB Rabbit pAb                | ELISA, WB, IF/ICC, IP | Human, Mouse, Rat |

## Recommended Dilutions

**AS014 ELISA** 1:5000 - 1:10000

**A6402 WB** 1:500 - 1:2000

For more information please visit  
[www.abclonal.com](http://www.abclonal.com)

## Product Information

**Source** **Isotype**

**Purification**

**Storage**

## Contact

 | [www.abclonal.com](http://www.abclonal.com)

## Immunogen Information

**Gene ID**

**Swiss Prot**

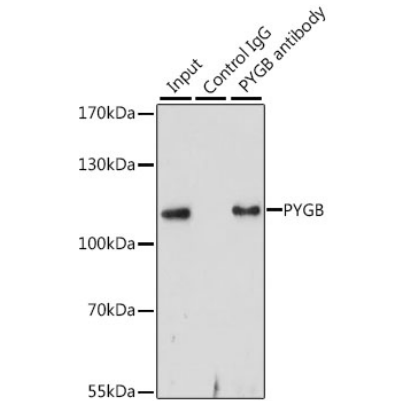
### Immunogen

Rabbit IgG

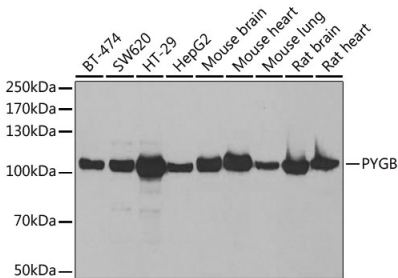
Recombinant fusion protein containing a sequence corresponding to amino acids 544-843 of human PYGB (NP\_002853.2).

### Synonyms

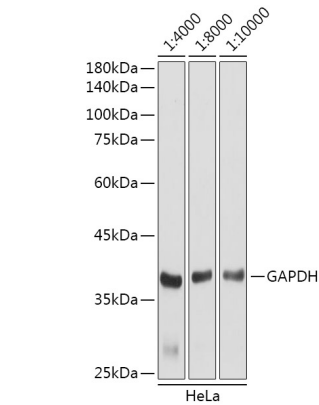
Validation Data



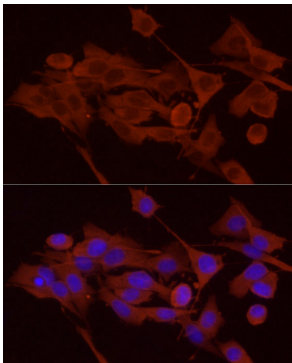
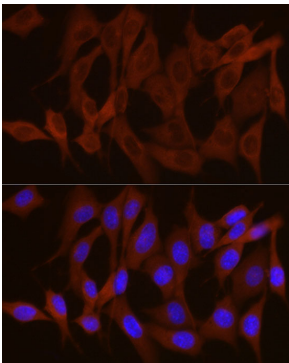
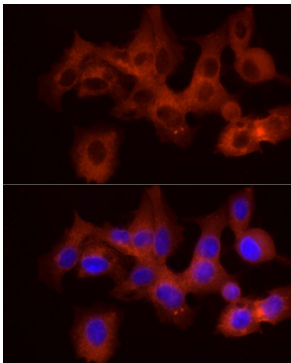
Immunoprecipitation analysis of 200 µg extracts of HepG2 cells, using 3 µg PYGB antibody (A6402). Western blot was performed from the immunoprecipitate using PYGB antibody (A6402) at a dilution of 1:1000.



Western blot analysis of various lysates using PYGB Rabbit pAb (A6402) at 1:1000 dilution. Secondary antibody: HRP Goat Anti-Rabbit IgG (H+L) (AS014) at 1:10000 dilution. Lysates/proteins: 25µg per lane. Blocking buffer: 3% nonfat dry milk in TBST. Detection: ECL Basic Kit (RM00020). Exposure time: 30s.



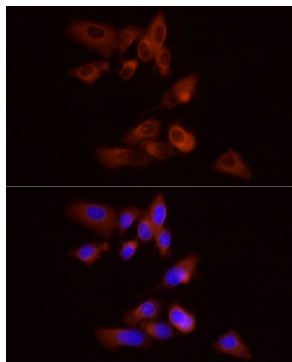
Western blot analysis of lysates from HeLa cells,using GAPDH (AC001) antibody as the primary antibody at dilution of 1:80000. Secondary antibody: using HRP Goat Anti-Rabbit IgG (H+L) antibody (AS014) at 1:4000-1:10000 dilution. Lysates/proteins: 25µg per lane. Blocking buffer: 3% nonfat dry milk in TBST. Detection: ECL Basic Kit (RM00020). Exposure time: 3s.



## Validation Data

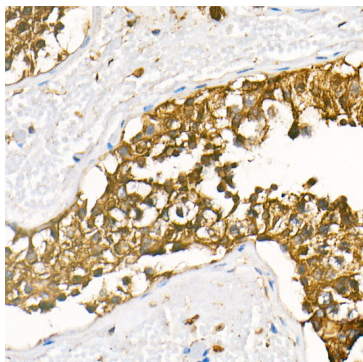
---

Immunofluorescence analysis of HepG2 cells using PYGB Rabbit pAb (A6402) at dilution of 1:100 (40x lens). Secondary antibody: Cy3 Goat Anti-Rabbit IgG (H+L) (AS007) at 1:500 dilution. Blue: DAPI for nuclear staining.



Immunofluorescence analysis of PC-3 cells using PYGB Rabbit pAb (A6402) at dilution of 1:100 (40x lens). Secondary antibody: Cy3 Goat Anti-Rabbit IgG (H+L) (AS007) at 1:500 dilution. Blue: DAPI for nuclear staining.

Immunofluorescence analysis of NIH/3T3 cells using PYGB Rabbit pAb (A6402) at dilution of 1:100 (40x lens). Secondary antibody: Cy3 Goat Anti-Rabbit IgG (H+L) (AS007) at 1:500 dilution. Blue: DAPI for nuclear staining.



Immunohistochemistry analysis of HRP Goat Anti-Rabbit IgG (H+L) in paraffin-embedded human testis tissue using HRP Goat Anti-Rabbit IgG (H+L) (AS014) at a dilution of 1:100 (40x lens). High pressure antigen retrieval was performed with 0.01 M citrate buffer (pH 6.0) prior to IHC staining.

Immunofluorescence analysis of PC-12 cells using PYGB Rabbit pAb (A6402) at dilution of 1:100 (40x lens). Secondary antibody: Cy3 Goat Anti-Rabbit IgG (H+L) (AS007) at 1:500 dilution. Blue: DAPI for nuclear staining.