

[One Step] PSMA3 Antibody Kit

Catalog No.: RK05686

Basic Information

Observed MW

Calculated MW

Category

Primary antibody

Background

Component

Catalog No.	Product Name	Applications	Cross-Reactivity
AS014	HRP Goat Anti-Rabbit IgG (H+L)	ELISA, WB, IHC-P	
A1245	PSMA3 Rabbit pAb	ELISA, WB, IP, IHC-P	Human, Mouse, Rat

Recommended Dilutions

AS014 ELISA 1:5000 - 1:10000

A1245 WB 1:500 - 1:1000

For more information please visit
www.abclonal.com

Product Information

Source **Isotype**

Purification

Storage

Contact

 | www.abclonal.com

Immunogen Information

Gene ID

Swiss Prot

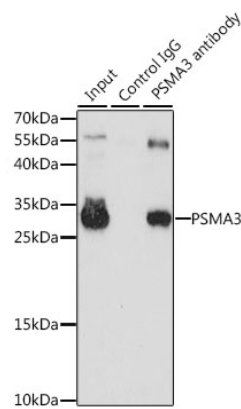
Immunogen

Rabbit IgG

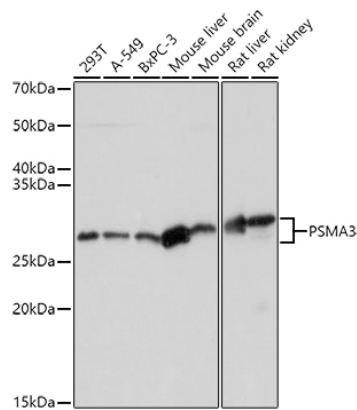
Recombinant fusion protein containing a sequence corresponding to amino acids 1-255 of human PSMA3 (NP_002779.1).

Synonyms

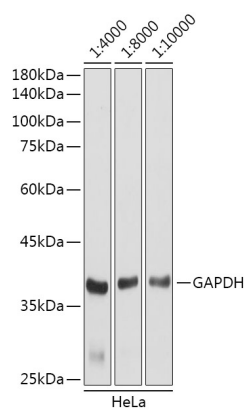
Validation Data



Immunoprecipitation analysis of 200 µg extracts of HL-60 cells, using 3 µg PSMA3 antibody (A1245). Western blot was performed from the immunoprecipitate using PSMA3 antibody (A1245) at a dilution of 1:1000.

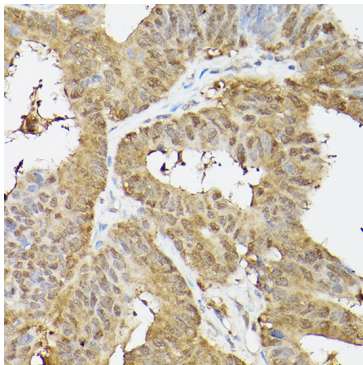


Western blot analysis of various lysates using PSMA3 Rabbit pAb (A1245) at 1:1000 dilution. Secondary antibody: HRP Goat Anti-Rabbit IgG (H+L) (AS014) at 1:10000 dilution. Lysates/proteins: 25µg per lane. Blocking buffer: 3% nonfat dry milk in TBST. Detection: ECL Basic Kit (RM00020). Exposure time: 3s.

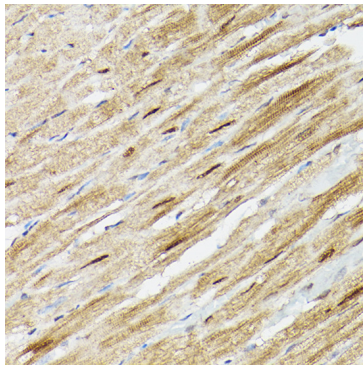


Western blot analysis of lysates from HeLa cells,using GAPDH (AC001) antibody as the primary antibody at dilution of 1:80000. Secondary antibody: using HRP Goat Anti-Rabbit IgG (H+L) antibody (AS014) at 1:4000-1:10000 dilution. Lysates/proteins: 25µg per lane. Blocking buffer: 3% nonfat dry milk in TBST. Detection: ECL Basic Kit (RM00020). Exposure time: 3s.

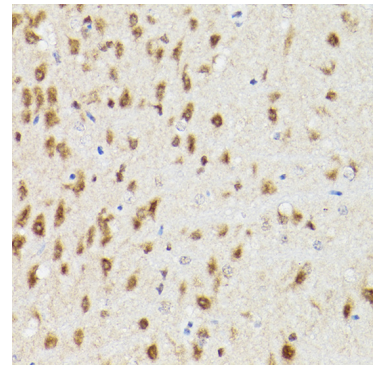
Validation Data



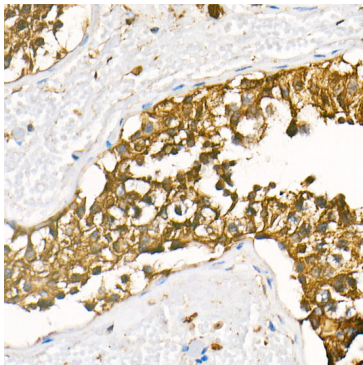
Immunohistochemistry analysis of PSMA3 in paraffin-embedded human colon carcinoma using PSMA3 Rabbit pAb (A1245) at dilution of 1:100 (40x lens). Perform high pressure antigen retrieval with 10 mM citrate buffer pH 6.0 before commencing with IHC staining protocol.



Immunohistochemistry analysis of PSMA3 in paraffin-embedded mouse heart using PSMA3 Rabbit pAb (A1245) at dilution of 1:100 (40x lens). Perform high pressure antigen retrieval with 10 mM citrate buffer pH 6.0 before commencing with IHC staining protocol.



Immunohistochemistry analysis of PSMA3 in paraffin-embedded rat brain using PSMA3 Rabbit pAb (A1245) at dilution of 1:100 (40x lens). Perform high pressure antigen retrieval with 10 mM citrate buffer pH 6.0 before commencing with IHC staining protocol.



Immunohistochemistry analysis of HRP Goat Anti-Rabbit IgG (H+L) in paraffin-embedded human testis tissue using HRP Goat Anti-Rabbit IgG (H+L) (AS014) at a dilution of 1:100 (40x lens). High pressure antigen retrieval was performed with 0.01 M citrate buffer (pH 6.0) prior to IHC staining.