

# [One Step] ERK2 Antibody Kit

Catalog No.: RK05664

## Basic Information

Observed MW

Calculated MW

### Category

Primary antibody

## Background

### Component

Catalog No.	Product Name	Applications	Cross-Reactivity
AS014	HRP Goat Anti-Rabbit IgG (H+L)	ELISA, WB, IHC-P	
A11186	[KO Validated] ERK2 Rabbit pAb	ELISA, WB, IHC-P, IF/ICC	Human, Mouse, Rat

## Recommended Dilutions

**AS014 ELISA** 1:5000 - 1:10000

**A11186 WB** 1:500 - 1:1000

For more information please visit  
[www.abclonal.com](http://www.abclonal.com)

## Product Information

**Source** **Isotype**

**Purification**

**Storage**

## Contact

 | [www.abclonal.com](http://www.abclonal.com)

## Immunogen Information

**Gene ID**

**Swiss Prot**

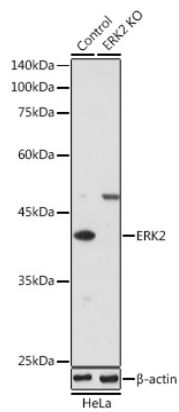
### Immunogen

Rabbit IgG

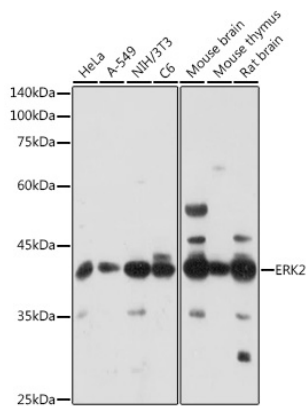
A synthetic peptide corresponding to a sequence within amino acids 200-300 of human ERK2 (NP\_002736.3).

### Synonyms

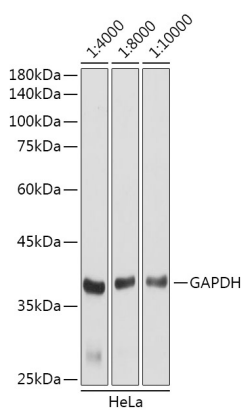
Validation Data



Western blot analysis of extracts from normal (control) and ERK2 knockout (KO) HeLa cells, using ERK2 antibody (A11186) at 1:1000 dilution.  
Secondary antibody: HRP Goat Anti-Rabbit IgG (H+L) (AS014) at 1:10000 dilution.  
Lysates/proteins: 25µg per lane.  
Blocking buffer: 3% nonfat dry milk in TBST.  
Detection: ECL Enhanced Kit (RM00021).  
Exposure time: 180s.

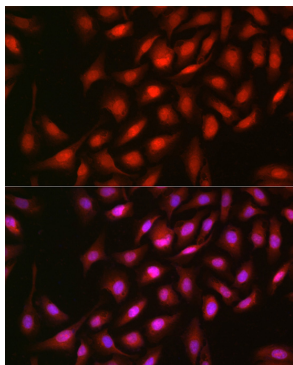


Western blot analysis of extracts of various cell lines, using ERK2 antibody (A11186) at 1:1000 dilution.  
Secondary antibody: HRP Goat Anti-Rabbit IgG (H+L) (AS014) at 1:10000 dilution.  
Lysates/proteins: 25µg per lane.  
Blocking buffer: 3% nonfat dry milk in TBST.  
Detection: ECL Enhanced Kit (RM00021).  
Exposure time: 180s.

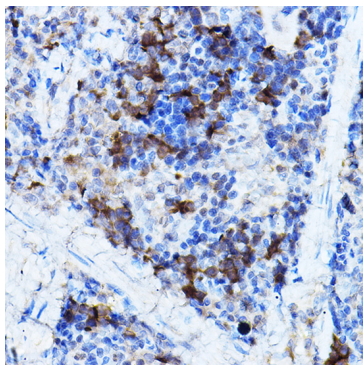


Western blot analysis of lysates from HeLa cells,using GAPDH (AC001) antibody as the primary antibody at dilution of 1:80000.  
Secondary antibody: using HRP Goat Anti-Rabbit IgG (H+L) antibody (AS014) at 1:4000-1:10000 dilution.  
Lysates/proteins: 25µg per lane.  
Blocking buffer: 3% nonfat dry milk in TBST.  
Detection: ECL Basic Kit (RM00020).  
Exposure time: 3s.

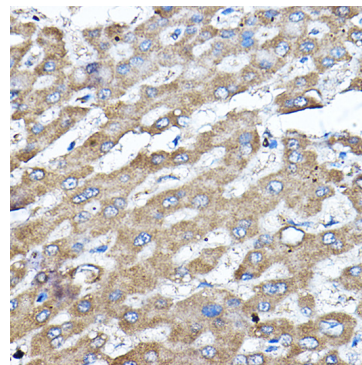
## Validation Data



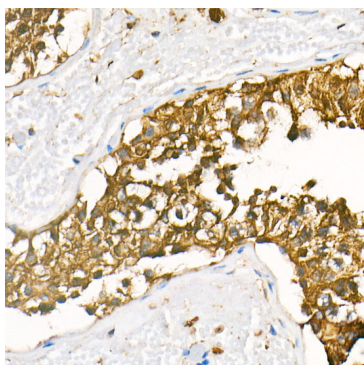
Immunofluorescence analysis of U-2 OS cells using [KO Validated] ERK2 Rabbit pAb (A11186) at dilution of 1:100 (40x lens). Blue: DAPI for nuclear staining.



Immunohistochemistry analysis of paraffin-embedded rat spleen using [KO Validated] ERK2 Rabbit pAb (A11186) at dilution of 1:100 (40x lens). Perform high pressure antigen retrieval with 10 mM citrate buffer pH 6.0 before commencing with IHC staining protocol.



Immunohistochemistry analysis of paraffin-embedded human liver using [KO Validated] ERK2 Rabbit pAb (A11186) at dilution of 1:100 (40x lens). Perform high pressure antigen retrieval with 10 mM citrate buffer pH 6.0 before commencing with IHC staining protocol.



Immunohistochemistry analysis of HRP Goat Anti-Rabbit IgG (H+L) in paraffin-embedded human testis tissue using HRP Goat Anti-Rabbit IgG (H+L) (AS014) at a dilution of 1:100 (40x lens). High pressure antigen retrieval was performed with 0.01 M citrate buffer (pH 6.0) prior to IHC staining.