

# [One Step] Arp3 Antibody Kit

Catalog No.: RK05618

## Basic Information

Observed MW

Calculated MW

### Category

Primary antibody

## Background

### Component

Catalog No.	Product Name	Applications	Cross-Reactivity
AS014	HRP Goat Anti-Rabbit IgG (H+L)	ELISA, WB, IHC-P	
A1064	Arp3 Rabbit pAb	ELISA, WB, IF/ICC	Human, Mouse

## Recommended Dilutions

**AS014 ELISA** 1:5000 - 1:10000

**A1064 WB** 1:500 - 1:2000

For more information please visit  
[www.abclonal.com](http://www.abclonal.com)

## Product Information

**Source** **Isotype**

**Purification**

**Storage**

## Contact

 | [www.abclonal.com](http://www.abclonal.com)

## Immunogen Information

**Gene ID**

**Swiss Prot**

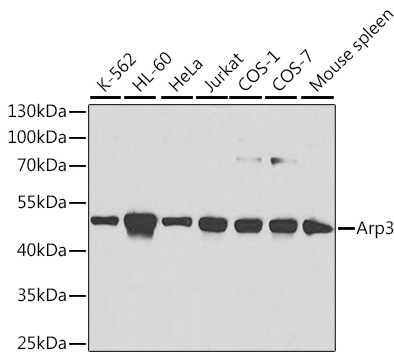
### Immunogen

Rabbit IgG

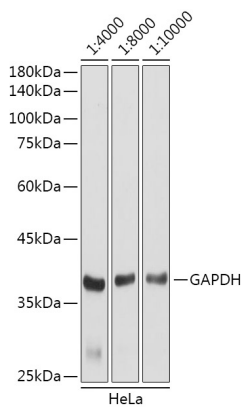
Recombinant fusion protein containing a sequence corresponding to amino acids 1-418 of human Arp3 (NP\_005712.1).

### Synonyms

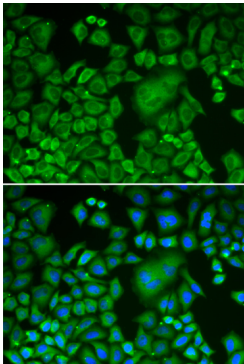
Validation Data



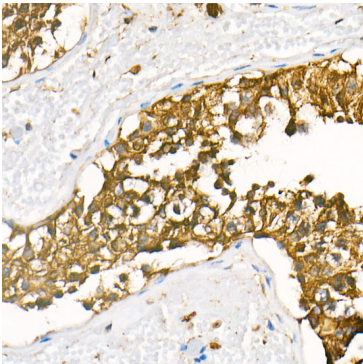
Western blot analysis of extracts of various cell lines, using Arp3 antibody (A1064) at 1:1000 dilution.  
Secondary antibody: HRP Goat Anti-Rabbit IgG (H+L) (AS014) at 1:10000 dilution.  
Lysates/proteins: 25µg per lane.  
Blocking buffer: 3% nonfat dry milk in TBST.  
Detection: ECL Basic Kit (RM00020).



Western blot analysis of lysates from HeLa cells,using GAPDH (AC001) antibody as the primary antibody at dilution of 1:80000.  
Secondary antibody: using HRP Goat Anti-Rabbit IgG (H+L) antibody (AS014) at 1:4000-1:10000 dilution.  
Lysates/proteins: 25µg per lane.  
Blocking buffer: 3% nonfat dry milk in TBST.  
Detection: ECL Basic Kit (RM00020).  
Exposure time: 3s.



Immunofluorescence analysis of HeLa cells using Arp3 antibody (A1064). Blue: DAPI for nuclear staining.



Immunohistochemistry analysis of HRP Goat Anti-Rabbit IgG (H+L) in paraffin-embedded human testis tissue using HRP Goat Anti-Rabbit IgG (H+L) (AS014) at a dilution of 1:100 (40x lens). High pressure antigen retrieval was performed with 0.01 M citrate buffer (pH 6.0) prior to IHC staining.