

Phospho-PLCG2-Y1217 Antibody kit

Catalog No.: RK04094

Basic Information

Observed MW

150kDa

Calculated MW

148kDa

Category

Primary antibody

Recommended Dilutions

AP0805 WB 1:500 - 1:2000

A2182 WB 1:500 - 1:2000

For more information please visit
www.abclonal.com

Product Information

Source	Isotype
Rabbit	IgG

Purification

Affinity purification

Storage

Store at -20°C. Avoid freeze / thaw cycles.

Buffer: PBS with 0.01% thimerosal, 50% glycerol, pH7.3.

Contact

 | www.abclonal.com

Background

The protein encoded by this gene is a transmembrane signaling enzyme that catalyzes the conversion of 1-phosphatidyl-1D-myo-inositol 4,5-bisphosphate to 1D-myo-inositol 1,4,5-trisphosphate (IP3) and diacylglycerol (DAG) using calcium as a cofactor. IP3 and DAG are second messenger molecules important for transmitting signals from growth factor receptors and immune system receptors across the cell membrane. Mutations in this gene have been found in autoinflammation, antibody deficiency, and immune dysregulation syndrome and familial cold autoinflammatory syndrome 3.

Component

Catalog No.	Product Name	Applications	Cross-Reactivity
AP0805	Phospho-PLC gamma 2 (PLCG2)-Y1217 Rabbit pAb	ELISA, WB, IHC-P	Human, Mouse
A2182	PLC gamma 2 (PLCG2) Rabbit pAb	ELISA, WB, IF/ICC	Human, Mouse

Immunogen Information

Gene ID

5336

Swiss Prot

P16885

Immunogen

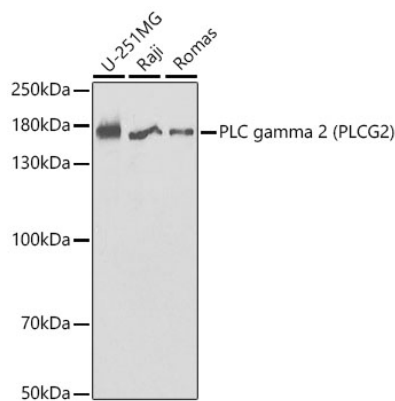
A synthetic phosphorylated peptide around Y1217 of human PLC gamma 2 (PLCG2) (NP_002652.2).

Recombinant fusion protein containing a sequence corresponding to amino acids 1-300 of human PLC gamma 2 (PLC gamma 2 (PLCG2)) (NP_002652.2).

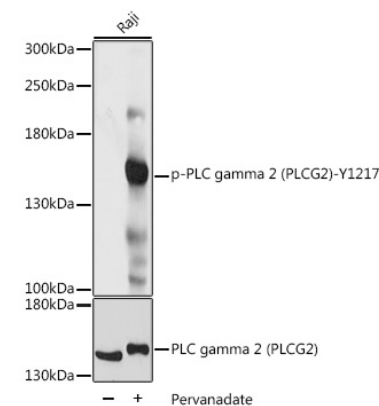
Synonyms

PLCG2; APLAID; FCAS3; PLC-IV; PLC-gamma-2

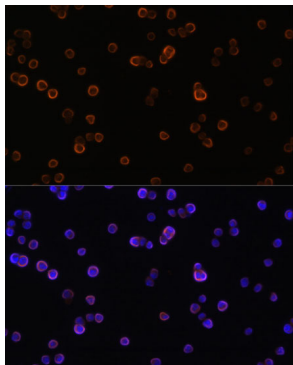
Validation Data



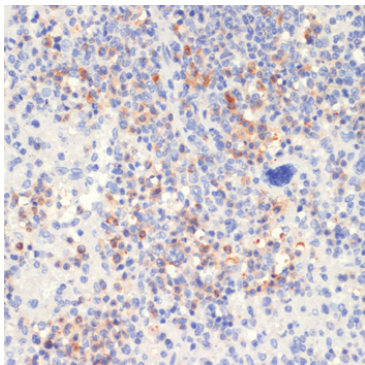
Western blot analysis of extracts of various cell lines, using PLC gamma 2 (PLC gamma 2 (PLCG2)) antibody (A2182) at 1:1000 dilution.
Secondary antibody: HRP Goat Anti-Rabbit IgG (H+L) (AS014) at 1:10000 dilution.
Lysates/proteins: 25µg per lane.
Blocking buffer: 3% nonfat dry milk in TBST.



Western blot analysis of lysates from Raji cells, using Phospho-PLC gamma 2 (PLCG2)-Y1217 Rabbit pAb (AP0805) at 1:1000 dilution or PLC gamma 2 (PLCG2) antibody (A2182). Raji cells were treated by Pervanadate (1 mM) at 37°C for 30 minutes.
Secondary antibody: HRP Goat Anti-Rabbit IgG (H+L) (AS014) at 1:10000 dilution.
Lysates/proteins: 25µg per lane.
Blocking buffer: 3% BSA.
Detection: ECL Basic Kit (RM00020).
Exposure time: 1s.



Immunofluorescence analysis of Raw264.7 cells using PLC gamma 2 (PLC gamma 2 (PLCG2)) antibody (A2182) at dilution of 1:100. Blue: DAPI for nuclear staining.



Immunohistochemistry analysis of Phospho-PLC gamma 2 (PLCG2)-Y1217 in paraffin-embedded mouse spleen using Phospho-PLC gamma 2 (PLCG2)-Y1217 Rabbit pAb (AP0805) at dilution of 1:100 (40x lens). Perform microwave antigen retrieval with 10 mM Tris/EDTA buffer pH 9.0 before commencing with IHC staining protocol.