

AS079

Leader in Biomolecular Solutions for Life Science



## HRP-conjugated Mouse anti-Rabbit IgG (H+L)

Catalog No.: AS079

1 Publications

### Basic Information

#### Observed MW

36kDa

#### Calculated MW

#### Category

Secondary Antibody

#### Applications

WB

#### Cross-Reactivity

#### Conjugate

HRP

### Background

Secondary antibodies are affinity-purified antibodies which will work with target-specific primary antibody in the detection, sorting or purification of its specified target. Secondary antibodies offer increased versatility enabling users to use many detection systems (e.g. HRP, AP, fluorescence). They can also provide greater sensitivity through signal amplification as multiple secondary antibodies. Most commonly, secondary antibodies are generated by immunizing the host animal (different from host species of primary antibody) with a pooled population of normal immunoglobulins from the host species of primary antibody and can be further purified and modified (i.e. antibody fragmentation, label conjugation, etc.) to ensure well-characterized specificity to corresponding normal immunoglobulins.

### Recommended Dilutions

WB 1:5000 - 1:20000

### Immunogen Information

#### Gene ID

#### Swiss Prot

#### Immunogen

Rabbit IgG

#### Synonyms

### Contact



[www.abclonal.com](http://www.abclonal.com)

### Product Information

#### Source

Mouse

#### Isotype

IgG

#### Purification

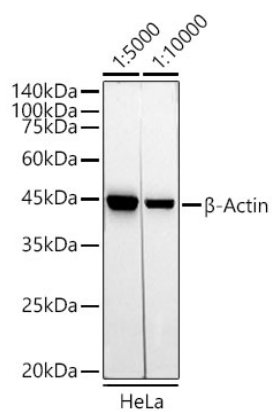
Affinity purification

#### Storage

Store at -20°C. Avoid freeze / thaw cycles.

Buffer: PBS with 0.75% BSA, 50% glycerol, pH 7.3.

## Validation Data



Western blot analysis of lysates from HeLa cells, using  $\beta$ -Actin (AC026) antibody as the primary antibody at dilution of 1:10000.

Secondary antibody: using HRP-conjugated AffiniPure Mouse Anti-Rabbit IgG (H+L) antibody (AS079)) at 1:5000-1:10000 dilution.