

AS074

Leader in Biomolecular Solutions for Life Science



ABflo® 594-conjugated Goat anti-Rabbit IgG (H+L)

Catalog No.: AS074

3 Publications

Basic Information

Observed MW

Calculated MW

Category

Secondary Antibody

Applications

IF/ICC,FC

Cross-Reactivity

Wide range of species

Conjugate

ABflo® 594. Ex:588nm. Em:604nm.

Background

Secondary antibodies are affinity-purified antibodies which will work with target-specific primary antibody in the detection, sorting or purification of its specified target. Secondary antibodies offer increased versatility enabling users to use many detection systems (e.g. HRP, AP, fluorescence). They can also provide greater sensitivity through signal amplification as multiple secondary antibodies. Most commonly, secondary antibodies are generated by immunizing the host animal (different from host species of primary antibody) with a pooled population of normal immunoglobulins from the host species of primary antibody and can be further purified and modified (i.e. antibody fragmentation, label conjugation, etc.) to ensure well-characterized specificity to corresponding normal immunoglobulins.

Recommended Dilutions

FC	1:100 - 1:800
IF/ICC	1:50 - 1:200

Immunogen Information

Gene ID

Swiss Prot

Immunogen

Rabbit IgG

Synonyms

Contact



www.abclonal.com

Product Information

Source

Goat

Isotype

ABflo™ 594 conjugated IgG

Purification

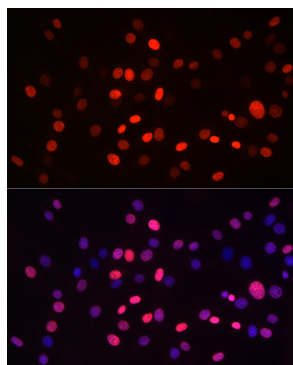
Affinity purification

Storage

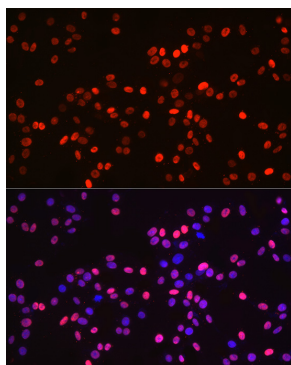
Store at -20°C. Avoid freeze / thaw cycles.

Buffer: PBS with 0.025% Sodium Azide,0.75% BSA,50% glycerol,pH7.3.

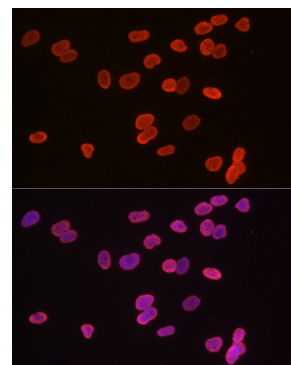
Validation Data



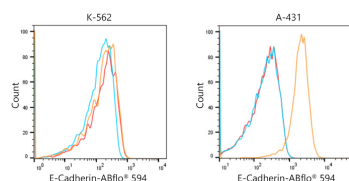
Immunofluorescence analysis of NIH/3T3 cells using MonoMethyl-Histone H3-K9 Rabbit mAb (A22079) (40x lens), the secondary antibody was ABflo® 594-conjugated AffiniPure Goat Anti antibody (AS074) used at dilution of 1 : 200. Secondary antibody: Cy3 Goat Anti-Rabbit IgG (H+L) (AS007) at 1:500 dilution. Blue: DAPI for nuclear staining.



Immunofluorescence analysis of PC-12 cells using MonoMethyl-Histone H3-K9 Rabbit mAb (A22079) (40x lens), the secondary antibody was ABflo® 594-conjugated AffiniPure Goat Anti antibody (AS074) used at dilution of 1 : 200. Secondary antibody: Cy3 Goat Anti-Rabbit IgG (H+L) (AS007) at 1:500 dilution. Blue: DAPI for nuclear staining.



Immunofluorescence analysis of HeLa cells using MonoMethyl-Histone H3-K9 Rabbit mAb (A22079) (40x lens), the secondary antibody was ABflo® 594-conjugated AffiniPure Goat Anti antibody (AS074) at dilution of 1 : 200. Secondary antibody: Cy3 Goat Anti-Rabbit IgG (H+L) (AS007) at 1:500 dilution. Blue: DAPI for nuclear staining.



Flow cytometric analysis of Positive antibody E-Cadherin Rabbit mAb (2.5µg/mL) in various cells (orange) compare to Rabbit rabbit isotype control (blue) and non-staining control (Red). The secondary antibody used was ABflo® 594-conjugated AffiniPure Goat Anti-Rabbit IgG (H+L) (AS074) at 1:100.