

AS054

Leader in Biomolecular Solutions for Life Science



ABflo® 594-conjugated Goat anti-Mouse IgG (H+L)

Catalog No.: AS054

12 Publications

Basic Information

Observed MW

Refer to figures

Calculated MW

Category

Secondary Antibody

Applications

IF/ICC,FC

Cross-Reactivity

Conjugate

ABflo® 594. Ex:588nm. Em:604nm.

Background

Secondary antibodies are affinity-purified antibodies which will work with target-specific primary antibody in the detection, sorting or purification of its specified target. Secondary antibodies offer increased versatility enabling users to use many detection systems (e.g. HRP, AP, fluorescence). They can also provide greater sensitivity through signal amplification as multiple secondary antibodies. Most commonly, secondary antibodies are generated by immunizing the host animal (different from host species of primary antibody) with a pooled population of normal immunoglobulins from the host species of primary antibody and can be further purified and modified (i.e. antibody fragmentation, label conjugation, etc.) to ensure well-characterized specificity to corresponding normal immunoglobulins.

Recommended Dilutions

IF/ICC	1:50 - 1:200
FC	1:100 - 1:500

Immunogen Information

Gene ID	Swiss Prot
---------	------------

Immunogen

Mouse IgG

Synonyms

Contact



www.abclonal.com

Product Information

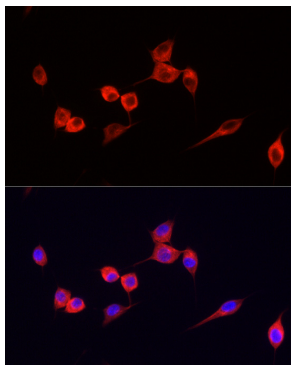
Source	Isotype	Purification
Goat	IgG	Affinity purification

Storage

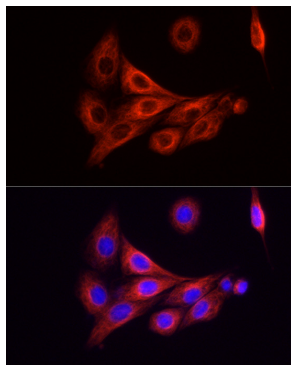
Store at -20°C. Avoid freeze / thaw cycles.

Buffer: PBS with 0.02% sodium azide,1% BSA,50% glycerol,pH7.3.

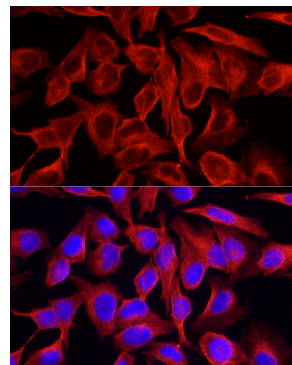
Validation Data



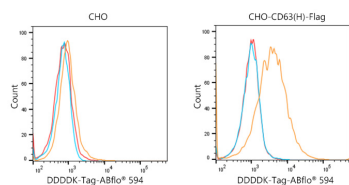
Immunofluorescence analysis of NIH/3T3 cells using ABflo® 594-conjugated Goat Anti-Mouse IgG (H+L) antibody (AS054) at dilution of 1:200 (40x lens). Blue: DAPI for nuclear staining.



Immunofluorescence analysis of PC-12 cells using ABflo® 594-conjugated Goat Anti-Mouse IgG (H+L) antibody (AS054) at dilution of 1:200 (40x lens). Blue: DAPI for nuclear staining.



Immunofluorescence analysis of HeLa cells using ABflo® 594-conjugated Goat Anti-Mouse IgG (H+L) antibody (AS054) at dilution of 1:200 (40x lens). Blue: DAPI for nuclear staining.



Flow cytometric analysis of Positive antibody (AE005) (2.5µg/mL) in various cells (orange) compare to Mouse isotype control (blue) and non-staining control (Red).The secondary antibody used was ABflo® 594-conjugated Goat Anti-Mouse IgG (H+L) (AS054) at 1:100.