

AS037

Leader in Biomolecular Solutions for Life Science



ABflo® 488-conjugated Goat anti-Mouse IgG (H+L)

Catalog No.: AS037

22 Publications

Basic Information

Observed MW

Calculated MW

Category

Secondary Antibody

Applications

IF/ICC,FC

Cross-Reactivity

Conjugate

ABflo® 488. Ex:491nm. Em:516nm.

Background

Secondary antibodies are affinity-purified antibodies which will work with target-specific primary antibody in the detection, sorting or purification of its specified target. Secondary antibodies offer increased versatility enabling users to use many detection systems (e.g. HRP, AP, fluorescence). They can also provide greater sensitivity through signal amplification as multiple secondary antibodies. Most commonly, secondary antibodies are generated by immunizing the host animal (different from host species of primary antibody) with a pooled population of normal immunoglobulins from the host species of primary antibody and can be further purified and modified (i.e. antibody fragmentation, label conjugation, etc.) to ensure well-characterized specificity to corresponding normal immunoglobulins.

Recommended Dilutions

IF/ICC 1:50 - 1:200

FC 1:100 - 1:500

Immunogen Information

Gene ID

Swiss Prot

Immunogen

Mouse IgG

Synonyms

Contact



www.abclonal.com

Product Information

Source

Goat

Isotype

IgG

Purification

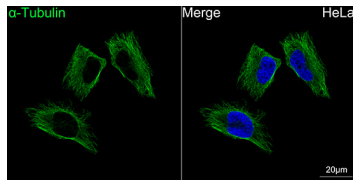
Affinity purification

Storage

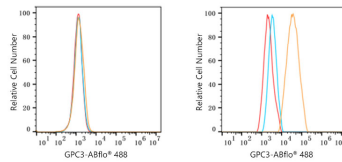
Store at -20°C. Avoid freeze / thaw cycles.

Buffer: PBS with 0.02% sodium azide,1% BSA,50% glycerol,pH7.3.

Validation Data



Confocal imaging of HeLa cells using α -Tubulin Mouse mAb (AC012, dilution 1:400) followed by a further incubation with ABflo® 488-conjugated Goat Anti-Mouse IgG (H+L) (AS037, dilution 1:800) (Green). DAPI was used for nuclear staining (Blue). Objective: 100x.



Flow cytometry: 1×10^6 K-562 cells (negative control, left) and Hep G2 cells (right) were surface-stained with Mouse Anti-Human GPC3 mAb ($4 \mu\text{g/mL}$, orange line) or secondary antibody only (blue line). Non-fluorescently stained HepG2 and K-562 cells were used as blank control (red line). ABflo® 488-conjugated Goat Anti-Mouse IgG (H+L) (AS037, 1:500) was used as a secondary antibody.