

## FITC Goat Anti-Rabbit IgG (H+L)

|                         |        |                      |                      |
|-------------------------|--------|----------------------|----------------------|
| <b>Catalog No.</b>      | AS011  | <b>Category</b>      | Secondary Antibodies |
| <b>Applications</b>     | IF, FC | <b>Observed MW</b>   |                      |
| <b>Cross-reactivity</b> |        | <b>Calculated MW</b> |                      |

### Immunogen Information

|                   |            |
|-------------------|------------|
| <b>Immunogen</b>  | Rabbit IgG |
| <b>Gene ID</b>    |            |
| <b>Swiss prot</b> |            |
| <b>Synonyms</b>   |            |

### Product information

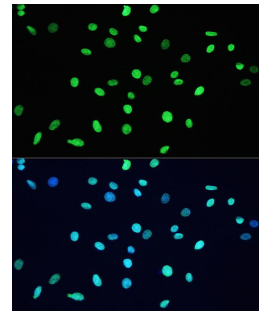
|                            |   |
|----------------------------|---|
| <b>Source</b>              | Goat  |
| <b>Isotype</b>             | Fluorescein conjugated IgG  |
| <b>Purification method</b> | Affinity purification   |
| <b>Storage</b>             | Store at -20°C. Avoid freeze / thaw cycles.<br>Buffer: 50% glycerol, pH7.3. |

### Background

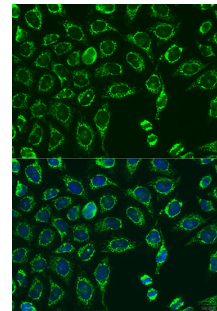
### Recommended Dilutions

ICC 1:20 -  
1:100

FC 1:20 -  
1:100



Immunofluorescence - FITC Goat Anti-Rabbit IgG (H+L) (AS011)



Immunofluorescence - FITC Goat Anti-Rabbit IgG (H+L) (AS011)