

AP1440

Leader in Biomolecular Solutions for Life Science



Phospho-Stathmin 1-S25 Rabbit mAb

Catalog No.: AP1440

Recombinant

Basic Information

Observed MW

17kDa

Calculated MW

17kDa

Category

SMab Recombinant Monoclonal Antibody

Applications

WB, ELISA

Cross-Reactivity

Human, Rat

CloneNo number

ARC62298

Background

This gene belongs to the stathmin family of genes. It encodes a ubiquitous cytosolic phosphoprotein proposed to function as an intracellular relay integrating regulatory signals of the cellular environment. The encoded protein is involved in the regulation of the microtubule filament system by destabilizing microtubules. It prevents assembly and promotes disassembly of microtubules. Multiple transcript variants encoding different isoforms have been found for this gene.

Recommended Dilutions

WB 1:500 - 1:1000

Immunogen Information

Gene ID

3925

Swiss Prot

P16949

Immunogen

A synthetic phosphorylated peptide around S25 of human Stathmin 1 [NP_005554.1].

Synonyms

Lag; SMN; OP18; PP17; PP19; PR22; LAP18; C1orf215; Phospho-Stathmin 1-S25

Contact



www.abclonal.com

Product Information

Source

Rabbit

Isotype

IgG

Purification

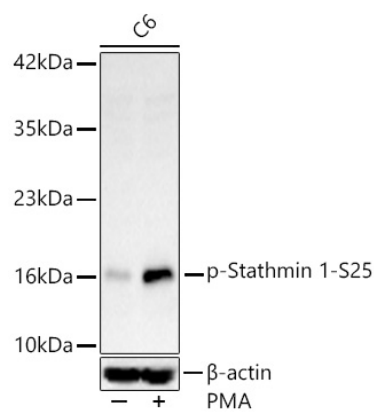
Affinity purification

Storage

Store at -20°C. Avoid freeze / thaw cycles.

Buffer: PBS with 0.05% proclin300, 0.05% BSA, 50% glycerol, pH7.3.

Validation Data



Western blot analysis of C6, using Phospho-Stathmin 1-S25 Rabbit mAb (AP1440) at 1:1000 dilution. C6 cells were treated by PMA/TPA (200 nM) at 37°C for 30 minutes after serum-starvation overnight. Secondary antibody: HRP Goat Anti-Rabbit IgG (H+L) (AS014) at 1:10000 dilution. Lysates/proteins: 25µg per lane. Blocking buffer: 3% nonfat dry milk in TBST. Detection: ECL Basic Kit (RM00020). Exposure time: 90s.