

AP1403

Leader in Biomolecular Solutions for Life Science



Phospho-AKT2 specific-S474 Rabbit pAb

Catalog No.: AP1403

Basic Information

Observed MW

63kDa/90kDa

Calculated MW

56kDa

Category

Polyclonal Antibody

Applications

WB, ELISA

Cross-Reactivity

Human

Background

This gene is a putative oncogene encoding a protein belonging to a subfamily of serine/threonine kinases containing SH2-like (Src homology 2-like) domains, which is involved in signaling pathways. The gene serves as an oncogene in the tumorigenesis of cancer cells. For example, its overexpression contributes to the malignant phenotype of a subset of human ductal pancreatic cancers. The encoded protein is a general protein kinase capable of phosphorylating several known proteins, and has also been implicated in insulin signaling.

Recommended Dilutions

WB 1:500 - 1:1000

Immunogen Information

Gene ID

208

Swiss Prot

P31751

Immunogen

A synthetic phosphorylated peptide around S474 of human AKT2 specific.

Synonyms

PKBB; PRKBB; HIHGHH; PKBBETA; RAC-BETA; Phospho-AKT2 specific-S474

Contact



www.abclonal.com

Product Information

Source

Rabbit

Isotype

IgG

Purification

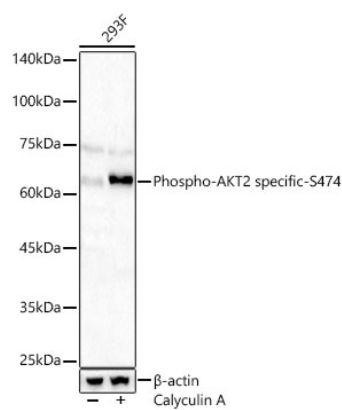
Affinity purification

Storage

Store at -20°C. Avoid freeze / thaw cycles.

Buffer: PBS with 0.01% thimerosal, 50% glycerol, pH 7.3.

Validation Data



Western blot analysis of lysates from 293F cells using Phospho-AKT2 specific-S474 Rabbit pAb (AP1403) at 1:900 dilution. 293F cells were treated by Calyculin A (50 nM) at 37°C for 30 minutes after serum-starvation overnight.
Secondary antibody: HRP Goat Anti-Rabbit IgG (H+L) (AS014) at 1:10000 dilution.
Lysates/proteins: 25 µg per lane.
Blocking buffer: 3% nonfat dry milk in TBST.
Detection: ECL Basic Kit (RM00020).
Exposure time: 90s.

Western blot analysis of lysates from 293F cells using Phospho-AKT2 specific-S474 Rabbit pAb (AP1403) at 1:900 dilution. 293F cells, 293F cells transfected with AKT3 and 293F cells transfected with AKT2 were treated by Calyculin A (50 nM) at 37°C for 30 minutes after serum-starvation overnight.
Secondary antibody: HRP Goat Anti-Rabbit IgG (H+L) (AS014) at 1:10000 dilution.

Lysates/proteins: 25 µg per lane.
Blocking buffer: 3% nonfat dry milk in TBST.
Detection: ECL Basic Kit (RM00020).
Exposure time: 1s.

