

AP1380

Leader in Biomolecular Solutions for Life Science



## Phospho-PKC mu-S910 Rabbit pAb

Catalog No.: AP1380

### Basic Information

**Observed MW**

115kDa

**Calculated MW**

102kDa

**Category**

Polyclonal Antibody

**Applications**

WB, ELISA

**Cross-Reactivity**

Human

### Background

The protein encoded by this gene is a serine/threonine protein kinase involved in many cellular processes, including Golgi body membrane integrity and transport, cell migration and differentiation, MAPK8/JNK1 and Ras pathway signaling, MAPK1/3 (ERK1/2) pathway signaling, cell survival, and regulation of cell shape and adhesion.

### Recommended Dilutions

WB 1:1000 - 1:5000

### Immunogen Information

**Gene ID**

5587

**Swiss Prot**

Q15139

**Immunogen**

A synthetic phosphorylated peptide around S910 of human PKC mu (NP\_002733.2).

**Synonyms**

PKD; PKCM; CHDED; PRKCM; PKC-MU; Phospho-PKC mu-S910

### Contact



[www.abclonal.com](http://www.abclonal.com)

### Product Information

**Source**

Rabbit

**Isotype**

IgG

**Purification**

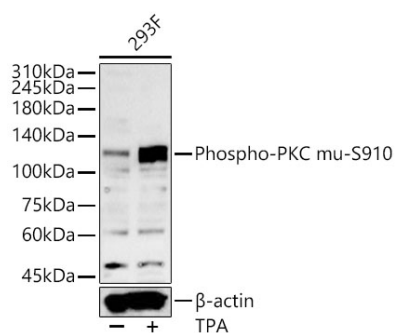
Affinity purification

**Storage**

Store at -20°C. Avoid freeze / thaw cycles.

Buffer: PBS with 0.05% proclin300, 50% glycerol, pH7.3.

## Validation Data



Western blot analysis of lysates from 293F cells using Phospho-PKC mu-S910 Rabbit pAb (AP1380) at 1:4000 dilution. 293F cells were treated by PMA/TPA (200 nM) at 37°C for 15 minutes after serum-starvation overnight.  
Secondary antibody: HRP Goat Anti-Rabbit IgG (H+L) (AS014) at 1:10000 dilution.  
Lysates/proteins: 25 µg per lane.  
Blocking buffer: 3% nonfat dry milk in TBST.  
Detection: ECL Basic Kit (RM00020).  
Exposure time: 180s.