

AP1297

Leader in Biomolecular Solutions for Life Science



# Phospho-RELB-S573 Rabbit pAb

Catalog No.: AP1297

## Basic Information

### Observed MW

75kDa

### Calculated MW

62kDa

### Category

Polyclonal Antibody

### Applications

WB, ELISA

### Cross-Reactivity

Mouse

## Background

Enables RNA polymerase II cis-regulatory region sequence-specific DNA binding activity and protein kinase binding activity. Involved in lymphocyte differentiation and negative regulation of interferon-beta production. Located in cytosol and nucleoplasm. Part of chromatin; nucleus; and transcription repressor complex. Colocalizes with centrosome. Implicated in breast cancer and immunodeficiency 53. Biomarker of breast cancer and transitional cell carcinoma.

## Recommended Dilutions

WB 1:500 - 1:1000

## Immunogen Information

### Gene ID

5971

### Swiss Prot

Q01201

### Immunogen

A synthetic phosphorylated peptide around S573 of human RELB (NP\_006500.2).

### Synonyms

IREL; I-REL; IMD53; REL-B; Phospho-RELB-S573

## Contact



[www.abclonal.com](http://www.abclonal.com)

## Product Information

### Source

Rabbit

### Isotype

IgG

### Purification

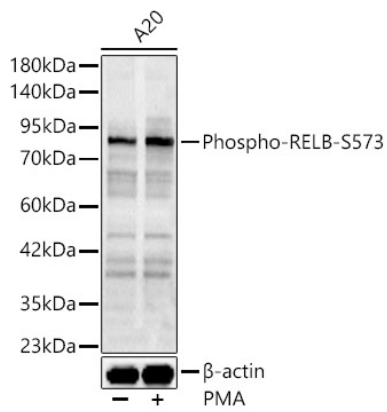
Affinity purification

### Storage

Store at -20°C. Avoid freeze / thaw cycles.

Buffer: PBS with 0.05% proclin300, 50% glycerol, pH7.3.

## Validation Data



Western blot analysis of lysates from A20, using Phospho-RELB-S573 Rabbit pAb (AP1297) at 1:500 dilution. A20 cells were treated by PMA/TPA (200 nM) at 37°C for 30 minutes after serum-starvation overnight.

Secondary antibody: HRP Goat Anti-Rabbit IgG (H+L) (AS014) at 1:10000 dilution.

Lysates/proteins: 25ug per lane.

Blocking buffer: 3% nonfat dry milk in TBST.

Detection: ECL Basic Kit (RM00020).

Exposure time: 180s.