

AP1269

Leader in Biomolecular Solutions for Life Science



## Phospho-EZH2/KMT6-T311 Rabbit pAb

Catalog No.: AP1269

### Basic Information

**Observed MW**

98kDa

**Calculated MW**

85kDa

**Category**

Polyclonal Antibody

**Applications**

WB, ELISA

**Cross-Reactivity**

Rat

### Background

This gene encodes a member of the Polycomb-group (PcG) family. PcG family members form multimeric protein complexes, which are involved in maintaining the transcriptional repressive state of genes over successive cell generations. This protein associates with the embryonic ectoderm development protein, the VAV1 oncoprotein, and the X-linked nuclear protein. This protein may play a role in the hematopoietic and central nervous systems. Multiple alternatively spliced transcript variants encoding distinct isoforms have been identified for this gene.

### Recommended Dilutions

WB 1:500 - 1:1000

### Immunogen Information

**Gene ID**

2146

**Swiss Prot**

Q15910

**Immunogen**

A synthetic phosphorylated peptide around T311 of human EZH2/KMT6 (NP\_001190176.1).

**Synonyms**

WVS; ENX1; KMT6; WVS2; ENX-1; EZH2b; KMT6A; Phospho-EZH2/KMT6-T311

### Contact



[www.abclonal.com](http://www.abclonal.com)

### Product Information

**Source**

Rabbit

**Isotype**

IgG

**Purification**

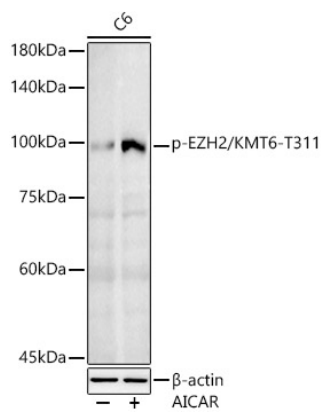
Affinity purification

**Storage**

Store at -20°C. Avoid freeze / thaw cycles.

Buffer: PBS with 0.05% proclin300, 50% glycerol, pH7.3.

## Validation Data



Western blot analysis of extracts of C6 cells, using Phospho-EZH2/KMT6-T311 antibody (AP1269) at 1:1000 dilution. C6 cells were treated by AICAR (0.5 mM) at 37°C for 30 minutes after serum-starvation overnight.

Secondary antibody: HRP Goat Anti-Rabbit IgG (H+L) (AS014) at 1:10000 dilution.

Lysates/proteins: 25µg per lane.

Blocking buffer: 3% nonfat dry milk in TBST.

Detection: ECL Enhanced Kit (RM00021).

Exposure time: 60s.