

# Phospho-Akt-T308 Rabbit mAb

**Catalog No.: AP1259** **Recombinant** **10 Publications**

## Basic Information

**Observed MW**

60kDa

**Calculated MW**

48kDa/55kDa/51kDa/54kDa

**Category**

Primary antibody

**Applications**

ELISA, WB

**Cross-Reactivity**

Mouse, Rat

**CloneNo number**

ARC50457

## Recommended Dilutions

**WB** 1:500 - 1:1000

## Background

The serine-threonine protein kinase encoded by the AKT1 gene is catalytically inactive in serum-starved primary and immortalized fibroblasts. AKT1 and the related AKT2 are activated by platelet-derived growth factor. The activation is rapid and specific, and it is abrogated by mutations in the pleckstrin homology domain of AKT1. It was shown that the activation occurs through phosphatidylinositol 3-kinase. In the developing nervous system AKT is a critical mediator of growth factor-induced neuronal survival. Survival factors can suppress apoptosis in a transcription-independent manner by activating the serine/threonine kinase AKT1, which then phosphorylates and inactivates components of the apoptotic machinery. Mutations in this gene have been associated with the Proteus syndrome. Multiple alternatively spliced transcript variants have been found for this gene.

## Immunogen Information

**Gene ID**

207/208/10000

**Swiss Prot**

P31749/P31751/Q9Y243

**Immunogen**

A synthetic phosphorylated peptide around T308 of human Akt (NP\_005154.2).

**Synonyms**

AKT1/AKT2/AKT3; Phospho-Akt-T308

## Contact

 | [www.abclonal.com](http://www.abclonal.com)

## Product Information

**Source**

Rabbit

**Isotype**

IgG

**Purification**

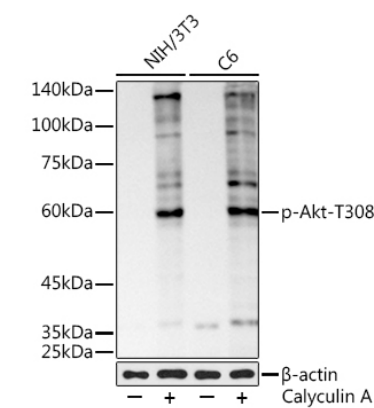
Affinity purification

**Storage**

Store at -20°C. Avoid freeze / thaw cycles.

Buffer: PBS with 0.05% proclin300, 0.05% BSA, 50% glycerol, pH7.3.

# Validation Data



Western blot analysis of extracts of various cell lines, using Phospho-Akt-T308 antibody (AP1259) at 1:1000 dilution. NIH/3T3 and C6 cells were treated by Calyculin A (100 nM) at 37°C for 30 minutes after serum-starvation overnight.  
Secondary antibody: HRP Goat Anti-Rabbit IgG (H+L) (AS014) at 1:10000 dilution.  
Lysates/proteins: 25µg per lane.  
Blocking buffer: 3% nonfat dry milk in TBST.  
Detection: ECL Basic Kit (RM00020).  
Exposure time: 180s.