

Phospho-MAPK14-T180/Y182+MAPK11-T180/Y182+MAPK13-T180/Y182+MAPK12-T183/Y1845 Rabbit pAb

Catalog No.: AP1256

Basic Information

Observed MW

43kDa

Calculated MW

Category

Primary antibody

Applications

ELISA, WB

Cross-Reactivity

Human, Rat

Background

Mapk14 (phosphoT180/Y182) monoclonal antibody is provided, clone number M139 is a monoclonal antibody prepared from mice, its clone number is M139. Mapk14 is also known as CSBP, CSPB1, Csbp1, Csbp2, Exip, Hog, MGC105413, Mxi2, Prkm14, Prkm15, RK, Sapk2A, p38, p38Hog, p38alpha; The full name of its gene is Mitogen Activated Protein Kinase 14.

Recommended Dilutions

WB 1:100 - 1:500

Immunogen Information

Gene ID

Swiss Prot

Q15759/P53778/O15264/Q16539

Immunogen

A synthetic phosphorylated peptide around T180 & Y182 of human MAPK14MAPK11 (NP_002742.3).

Synonyms

Contact

 | www.abclonal.com

Product Information

Source

Rabbit

Isotype

IgG

Purification

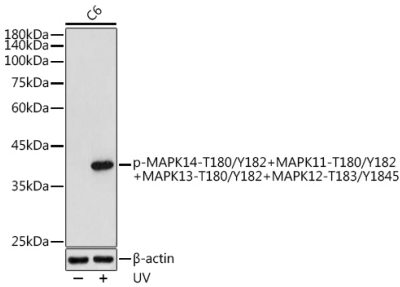
Affinity purification

Storage

Store at -20°C. Avoid freeze / thaw cycles.

Buffer: PBS with 0.05% proclin300, 50% glycerol, pH7.3.

Validation Data



Western blot analysis of extracts of C6 cells, using Phospho-MAPK14-T180/Y182+MAPK11-T180/Y182+MAPK13-T180/Y182+MAPK12-T183/Y1845 antibody (AP1256) at 1:500 dilution. C6 cells were treated by UV at room temperature for 15-30 minutes.
Secondary antibody: HRP Goat Anti-Rabbit IgG (H+L) (AS014) at 1:10000 dilution.
Lysates/proteins: 25µg per lane.
Blocking buffer: 3% nonfat dry milk in TBST.
Detection: ECL Enhanced Kit (RM00021).
Exposure time: 180s.