

Phospho-TDP-43/TARDBP-S409/S410 Rabbit pAb

Catalog No.: AP1241

Basic Information

Observed MW

Refer to figures

Calculated MW

45kDa

Category

Primary antibody

Applications

ELISA,DB,WB

Cross-Reactivity

Human

Background

HIV-1, the causative agent of acquired immunodeficiency syndrome (AIDS), contains an RNA genome that produces a chromosomally integrated DNA during the replicative cycle. Activation of HIV-1 gene expression by the transactivator Tat is dependent on an RNA regulatory element (TAR) located downstream of the transcription initiation site. The protein encoded by this gene is a transcriptional repressor that binds to chromosomally integrated TAR DNA and represses HIV-1 transcription. In addition, this protein regulates alternate splicing of the CFTR gene. A similar pseudogene is present on chromosome 20.

Recommended Dilutions

DB	1:500 - 1:1000
WB	1:500 - 1:2000

Immunogen Information

Gene ID	Swiss Prot
23435	Q13148

Immunogen

A synthetic phosphorylated peptide around S409 & S410 of human TDP-43/TARDBP (NP_031401.1).

Synonyms

ALS10; TDP-43; Phospho-TDP-43/TARDBP-S409/S410

Contact

 | www.abclonal.com

Product Information

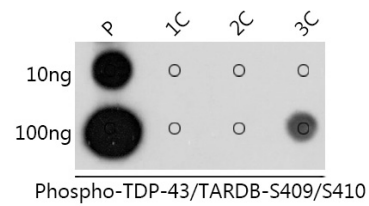
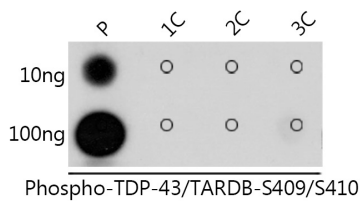
Source	Isotype	Purification
Rabbit	IgG	Affinity purification

Storage

Store at -20°C. Avoid freeze / thaw cycles.

Buffer: PBS with 0.05% proclin300, 50% glycerol, pH7.3.

Validation Data



Dot-blot analysis of all sorts of peptides using Phospho-TDP-43/TARDB-S409/S410 antibody (AP1241) at 1:1000 dilution. Exposure time: 1s.

Dot-blot analysis of all sorts of peptides using Phospho-TDP-43/TARDB-S409/S410 antibody (AP1241) at 1:1000 dilution. Exposure time: 10s.