

AP1230

Leader in Biomolecular Solutions for Life Science



## Phospho-RIPK1/RIP-S166 Rabbit pAb

Catalog No.: AP1230

5 Publications

### Basic Information

#### Observed MW

75kDa

#### Calculated MW

76kDa

#### Category

Polyclonal Antibody

#### Applications

WB, ELISA

#### Cross-Reactivity

Human, Mouse

### Background

This gene encodes a member of the receptor-interacting protein (RIP) family of serine/threonine protein kinases. The encoded protein plays a role in inflammation and cell death in response to tissue damage, pathogen recognition, and as part of developmental regulation. RIPK1/RIP3 kinase-mediated necrosis is referred to as necroptosis. Genetic disruption of this gene in mice results in death shortly after birth.

### Recommended Dilutions

WB 1:500 - 1:1000

### Immunogen Information

#### Gene ID

8737

#### Swiss Prot

Q13546

#### Immunogen

A synthetic phosphorylated peptide around S166 of human RIPK1/RIP (NP\_003795.2).

#### Synonyms

RIP; RIP1; AIEFL; IMD57; RIP-1; Phospho-RIPK1/RIP-S166

### Contact



[www.abclonal.com](http://www.abclonal.com)

### Product Information

#### Source

Rabbit

#### Isotype

IgG

#### Purification

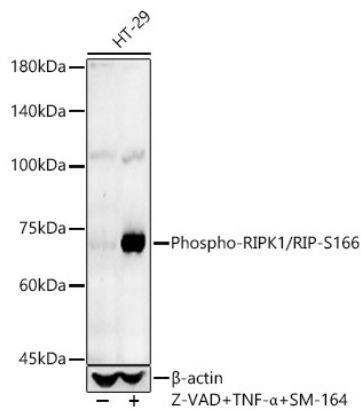
Affinity purification

#### Storage

Store at -20°C. Avoid freeze / thaw cycles.

Buffer: PBS with 0.01% thimerosal, 50% glycerol, pH 7.3.

## Validation Data



Western blot analysis of HT-29, using Phospho-RIPK1/RIP-S166 Rabbit pAb (AP1230) at 1:800 dilution. HT-29 cells were treated with Z-VAD (50uM), human TNF-α (50ng/ml) and SM-164 (200nM) at 37°C for 5 hour.

Secondary antibody: HRP Goat Anti-Rabbit IgG (H+L) (AS014) at 1:10000 dilution.

Lysates/proteins: 25ug per lane.

Blocking buffer: 3% nonfat dry milk in TBST.

Detection: ECL Basic Kit (RM00020).

Exposure time: 60s.