

AP1168

Leader in Biomolecular Solutions for Life Science



## Phospho-KRAS-S89 Rabbit pAb

Catalog No.: AP1168

### Basic Information

**Observed MW**

21kDa

**Calculated MW**

22kDa

**Category**

Polyclonal Antibody

**Applications**

WB, IHC-P, ELISA

**Cross-Reactivity**

Human, Mouse, Rat

### Background

This gene, a Kirsten ras oncogene homolog from the mammalian ras gene family, encodes a protein that is a member of the small GTPase superfamily. A single amino acid substitution is responsible for an activating mutation. The transforming protein that results is implicated in various malignancies, including lung adenocarcinoma, mucinous adenoma, ductal carcinoma of the pancreas and colorectal carcinoma. Alternative splicing leads to variants encoding two isoforms that differ in the C-terminal region.

### Recommended Dilutions

WB	1:500 - 1:2000
IHC-P	1:50 - 1:200

### Immunogen Information

**Gene ID**

3845

**Swiss Prot**

P01116

**Immunogen**

A synthetic phosphorylated peptide around S89 of human KRAS (NP\_001356715.1).

**Synonyms**

NS; NS3; OES; CFC2; RALD; K-Ras; KRAS1; KRAS2; RASK2; KI-RAS; C-K-RAS; K-RAS2A; K-RAS2B; K-RAS4A; K-RAS4B; K-Ras 2; 'C-K-RAS; c-Ki-ras; c-Ki-ras2; Phospho-KRAS-S89

### Contact



[www.abclonal.com](http://www.abclonal.com)

### Product Information

**Source**

Rabbit

**Isotype**

IgG

**Purification**

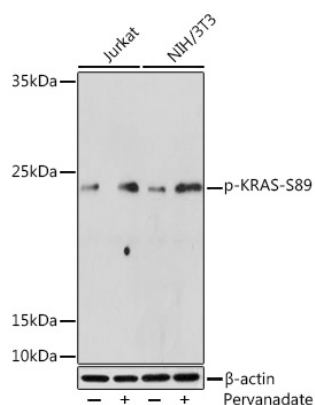
Affinity purification

**Storage**

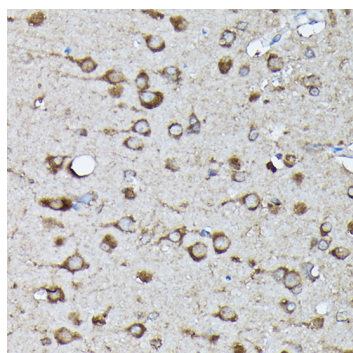
Store at -20°C. Avoid freeze / thaw cycles.

Buffer: PBS with 0.01% thimerosal, 50% glycerol, pH7.3.

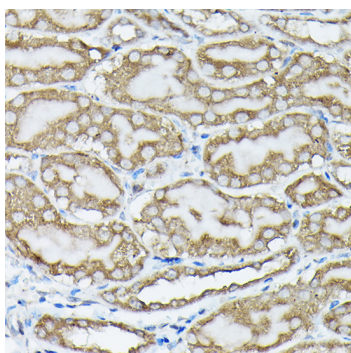
## Validation Data



Western blot analysis of various lysates using Phospho-KRAS-S89 Rabbit pAb (AP1168) at 1:500 dilution. Jurkat cells were treated by Pervanadate (1 mM) at 37°C for 30 minutes. NIH/3T3 cells were treated by Pervanadate (1 mM) at 37°C for 30 minutes. Secondary antibody: HRP Goat Anti-Rabbit IgG (H+L) (AS014) at 1:10000 dilution. Lysates/proteins: 25µg per lane. Blocking buffer: 3% BSA. Detection: ECL Enhanced Kit (RM00021). Exposure time: 180s.



Immunohistochemistry analysis of Phospho-KRAS-S89 in paraffin-embedded rat brain using Phospho-KRAS-S89 Rabbit pAb (AP1168) at dilution of 1:100 (40x lens). Perform high pressure antigen retrieval with 10 mM citrate buffer pH 6.0 before commencing with IHC staining protocol.



Immunohistochemistry analysis of Phospho-KRAS-S89 in paraffin-embedded mouse kidney using Phospho-KRAS-S89 Rabbit pAb (AP1168) at dilution of 1:100 (40x lens). Perform high pressure antigen retrieval with 10 mM citrate buffer pH 6.0 before commencing with IHC staining protocol.