

AP1154

Leader in Biomolecular Solutions for Life Science



Phospho-LRRK2-S935 Rabbit mAb

Catalog No.: AP1154

Recombinant

Basic Information

Observed MW

286kDa

Calculated MW

286kDa

Category

SMab Recombinant Monoclonal Antibody

Applications

WB, ELISA

Cross-Reactivity

Mouse, Rat

CloneNo number

ARC1694

Background

This gene is a member of the leucine-rich repeat kinase family and encodes a protein with an ankyrin repeat region, a leucine-rich repeat (LRR) domain, a kinase domain, a DFG-like motif, a RAS domain, a GTPase domain, a MLK-like domain, and a WD40 domain. The protein is present largely in the cytoplasm but also associates with the mitochondrial outer membrane. Mutations in this gene have been associated with Parkinson disease-8.

Recommended Dilutions

WB 1:500 - 1:2000

Immunogen Information

Gene ID

120892

Swiss Prot

Q5S007

Immunogen

A synthetic phosphorylated peptide around S935 of human LRRK2 (Q5S007).

Synonyms

PARK8; RIPK7; ROCO2; AURA17; DARDARIN; Phospho-LRRK2-S935

Contact



www.abclonal.com

Product Information

Source

Rabbit

Isotype

IgG

Purification

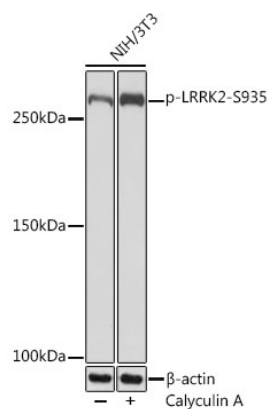
Affinity purification

Storage

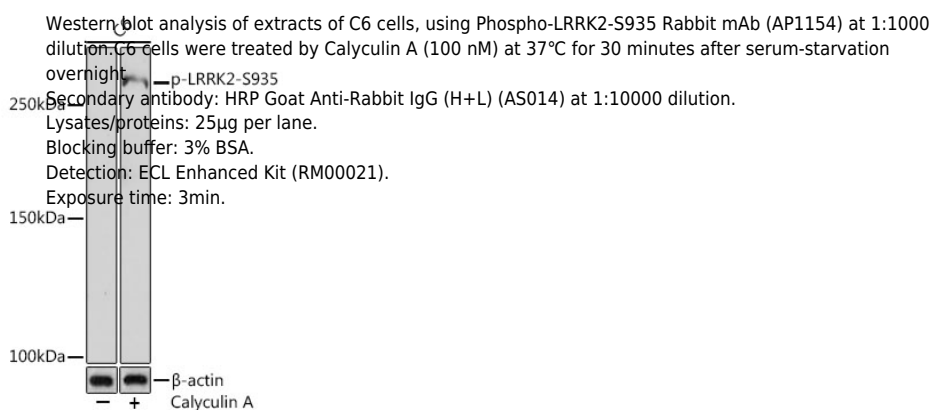
Store at -20°C. Avoid freeze / thaw cycles.

Buffer: PBS with 0.02% sodium azide, 0.05% BSA, 50% glycerol, pH7.3.

Validation Data



Western blot analysis of extracts of NIH/3T3 cells, using Phospho-LRRK2-S935 Rabbit mAb (AP1154) at 1:1000 dilution. NIH/3T3 cells were treated by Calyculin A (100 nM) at 37°C for 30 minutes after serum-starvation overnight.
 Secondary antibody: HRP Goat Anti-Rabbit IgG (H+L) (AS014) at 1:10000 dilution.
 Lysates/proteins: 25µg per lane.
 Blocking buffer: 3% BSA.
 Detection: ECL Basic Kit (RM00020).
 Exposure time: 3min.



Western blot analysis of extracts of C6 cells, using Phospho-LRRK2-S935 Rabbit mAb (AP1154) at 1:1000 dilution. C6 cells were treated by Calyculin A (100 nM) at 37°C for 30 minutes after serum-starvation overnight.
 Secondary antibody: HRP Goat Anti-Rabbit IgG (H+L) (AS014) at 1:10000 dilution.
 Lysates/proteins: 25µg per lane.
 Blocking buffer: 3% BSA.
 Detection: ECL Enhanced Kit (RM00021).
 Exposure time: 3min.