

AP1147

Leader in Biomolecular Solutions for Life Science



Phospho-p90Rsk/RSK1/RPS6KA1-S380 Rabbit mAb

Catalog No.: AP1147

Recombinant

1 Publications

Basic Information

Observed MW

90kDa

Calculated MW

83kDa

Category

SMab Recombinant Monoclonal Antibody

Applications

WB, ELISA

Cross-Reactivity

Human, Mouse, Rat

CloneNo number

ARC1608

Background

This gene encodes a member of the RSK (ribosomal S6 kinase) family of serine/threonine kinases. This kinase contains 2 nonidentical kinase catalytic domains and phosphorylates various substrates, including members of the mitogen-activated kinase (MAPK) signalling pathway. The activity of this protein has been implicated in controlling cell growth and differentiation. Alternate transcriptional splice variants, encoding different isoforms, have been characterized.

Recommended Dilutions

WB 1:500 - 1:1000

Immunogen Information

Gene ID

6195

Swiss Prot

Q15418

Immunogen

A synthetic phosphorylated peptide around S380 of human p90Rsk/RSK1/RPS6KA1KS6A1 (Q15418).

Synonyms

RSK; HU-1; RSK1; p90Rsk; MAPKAPK1; MAPKAPK1A; Phospho-p90Rsk/RSK1/RPS6KA1-S380

Contact



www.abclonal.com

Product Information

Source

Rabbit

Isotype

IgG

Purification

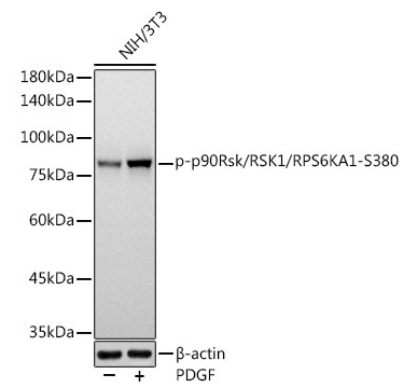
Affinity purification

Storage

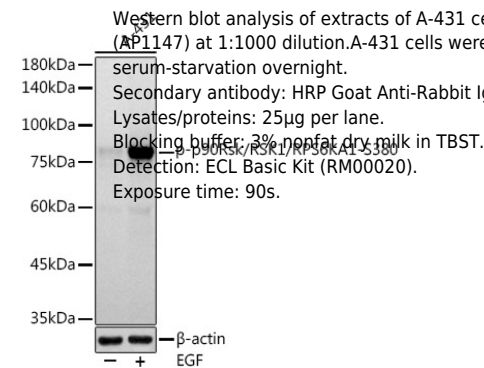
Store at -20°C. Avoid freeze / thaw cycles.

Buffer: PBS with 0.02% sodium azide, 0.05% BSA, 50% glycerol, pH7.3.

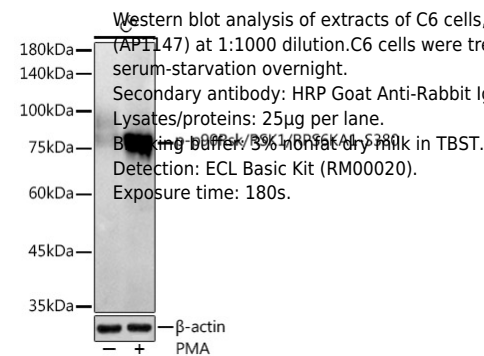
Validation Data



Western blot analysis of extracts of NIH/3T3 cells, using Phospho-p90Rsk/RSK1/RPS6KA1-S380 antibody (AP1147) at 1:1000 dilution.NIH/3T3 cells were treated by PDGF (100 ng/ml) at 37°C for 30 minutes after serum-starvation overnight.
Secondary antibody: HRP Goat Anti-Rabbit IgG (H+L) (AS014) at 1:10000 dilution.
Lysates/proteins: 25µg per lane.
Blocking buffer: 3% nonfat dry milk in TBST.
Detection: ECL Basic Kit (RM00020).
Exposure time: 3s.



Western blot analysis of extracts of A-431 cells, using Phospho-p90Rsk/RSK1/RPS6KA1-S380 antibody (AP1147) at 1:1000 dilution.A-431 cells were treated by EGF (100 ng/ml) at 37°C for 30 minutes after serum-starvation overnight.
Secondary antibody: HRP Goat Anti-Rabbit IgG (H+L) (AS014) at 1:10000 dilution.
Lysates/proteins: 25µg per lane.
Blocking buffer: 3% nonfat dry milk in TBST.
Detection: ECL Basic Kit (RM00020).
Exposure time: 90s.



Western blot analysis of extracts of C6 cells, using Phospho-p90Rsk/RSK1/RPS6KA1-S380 antibody (AP1147) at 1:1000 dilution.C6 cells were treated by PMA/TPA (200 nM) at 37°C for 30 minutes after serum-starvation overnight.
Secondary antibody: HRP Goat Anti-Rabbit IgG (H+L) (AS014) at 1:10000 dilution.
Lysates/proteins: 25µg per lane.
Blocking buffer: 3% nonfat dry milk in TBST.
Detection: ECL Basic Kit (RM00020).
Exposure time: 180s.