

AP1137

Leader in Biomolecular Solutions for Life Science



## Phospho-p53-S392 Rabbit mAb

Catalog No.: AP1137

Recombinant

2 Publications

### Basic Information

#### Observed MW

53kDa

#### Calculated MW

44kDa

#### Category

SMab Recombinant Monoclonal Antibody

#### Applications

WB, ELISA

#### Cross-Reactivity

Rat

#### CloneNo number

ARC0309

### Background

This gene encodes a tumor suppressor protein containing transcriptional activation, DNA binding, and oligomerization domains. The encoded protein responds to diverse cellular stresses to regulate expression of target genes, thereby inducing cell cycle arrest, apoptosis, senescence, DNA repair, or changes in metabolism. Mutations in this gene are associated with a variety of human cancers, including hereditary cancers such as Li-Fraumeni syndrome. Alternative splicing of this gene and the use of alternate promoters result in multiple transcript variants and isoforms. Additional isoforms have also been shown to result from the use of alternate translation initiation codons from identical transcript variants (PMIDs: 12032546, 20937277).

### Recommended Dilutions

WB 1:500 - 1:2000

### Immunogen Information

#### Gene ID

7157

#### Swiss Prot

P04637

#### Immunogen

A synthetic phosphorylated peptide around S392 of human p53 (P04637).

#### Synonyms

P53; BCC7; LFS1; BMFS5; TRP53; Phospho-p53-S392

### Contact



[www.abclonal.com](http://www.abclonal.com)

### Product Information

#### Source

Rabbit

#### Isotype

IgG

#### Purification

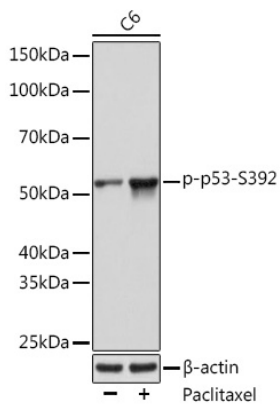
Affinity purification

#### Storage

Store at -20°C. Avoid freeze / thaw cycles.

Buffer: PBS with 0.02% sodium azide, 0.05% BSA, 50% glycerol, pH 7.3.

## Validation Data



Western blot analysis of extracts of C6 cells, using Phospho-p53-S392 (AP1137) at 1:1000 dilution. C6 cells were treated by Paclitaxel (100 nM) at 37°C for 20 hours. Secondary antibody: HRP Goat Anti-Rabbit IgG (H+L) (AS014) at 1:10000 dilution. Lysates/proteins: 25µg per lane. Blocking buffer: 3% BSA. Detection: ECL Basic Kit (RM00020). Exposure time: 10s.