

AP1134

Leader in Biomolecular Solutions for Life Science



Phospho-PKR/EIF2AK2-T446 Rabbit mAb

Catalog No.: AP1134

Recombinant

4 Publications

Basic Information

Observed MW

74kDa

Calculated MW

62kDa

Category

SMab Recombinant Monoclonal Antibody

Applications

WB, ELISA

Cross-Reactivity

Human

CloneNo number

ARC0293

Background

The protein encoded by this gene is a serine/threonine protein kinase that is activated by autophosphorylation after binding to dsRNA. The activated form of the encoded protein can phosphorylate translation initiation factor EIF2S1, which in turn inhibits protein synthesis. This protein is also activated by manganese ions and heparin. The encoded protein plays an important role in the innate immune response against multiple DNA and RNA viruses.

Recommended Dilutions

WB 1:500 - 1:2000

Immunogen Information

Gene ID

5610

Swiss Prot

P19525

Immunogen

A synthetic phosphorylated peptide around T446 of human PKR/EIF2AK2E2AK2 (P19525).

Synonyms

PKR; PRKR; DYT33; LEUDEN; EIF2AK1; PPP1R83; Phospho-PKR/EIF2AK2-T446

Contact



www.abclonal.com

Product Information

Source

Rabbit

Isotype

IgG

Purification

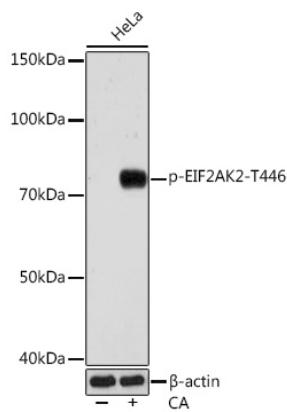
Affinity purification

Storage

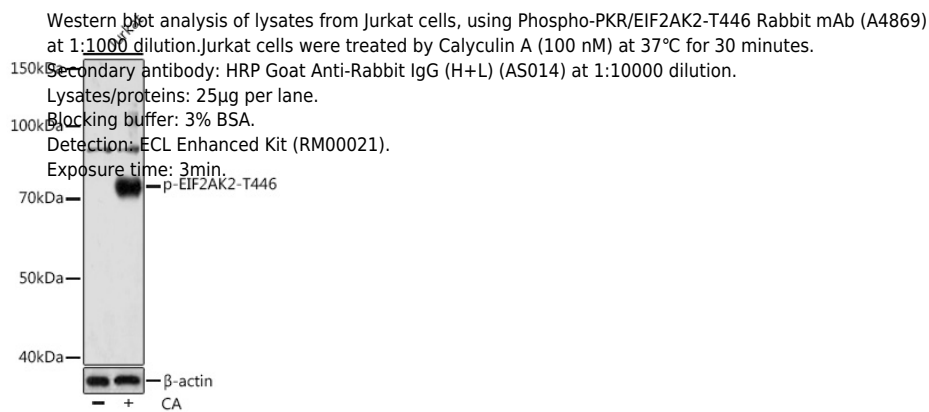
Store at -20°C. Avoid freeze / thaw cycles.

Buffer: PBS with 0.02% sodium azide, 0.05% BSA, 50% glycerol, pH 7.3.

Validation Data



Western blot analysis of lysates from HeLa cells, using Phospho-PKR/EIF2AK2-T446 Rabbit mAb (A4869) at 1:1000 dilution. HeLa cells were treated by Calyculin A (100 nM) at 37°C for 30 minutes after serum-starvation overnight.
 Secondary antibody: HRP Goat Anti-Rabbit IgG (H+L) (AS014) at 1:10000 dilution.
 Lysates/proteins: 25 µg per lane.
 Blocking buffer: 3% BSA.
 Detection: ECL Basic Kit (RM00020).
 Exposure time: 3 min.



Western blot analysis of lysates from Jurkat cells, using Phospho-PKR/EIF2AK2-T446 Rabbit mAb (A4869) at 1:1000 dilution. Jurkat cells were treated by Calyculin A (100 nM) at 37°C for 30 minutes.
 Secondary antibody: HRP Goat Anti-Rabbit IgG (H+L) (AS014) at 1:10000 dilution.
 Lysates/proteins: 25 µg per lane.
 Blocking buffer: 3% BSA.
 Detection: ECL Enhanced Kit (RM00021).
 Exposure time: 3 min.